

ROCK

SPECKLE
COLLECTION

15MM x THICKNESS
FULLBODY

DESIGNED TO
architectural visions



Where size transforms space into a statement of luxury.

Large format full body slabs create a seamless visual flow, reducing joints and enhancing the feeling of openness. Designed for modern architecture, these slabs bring elegance and depth to every interior and exterior surface.



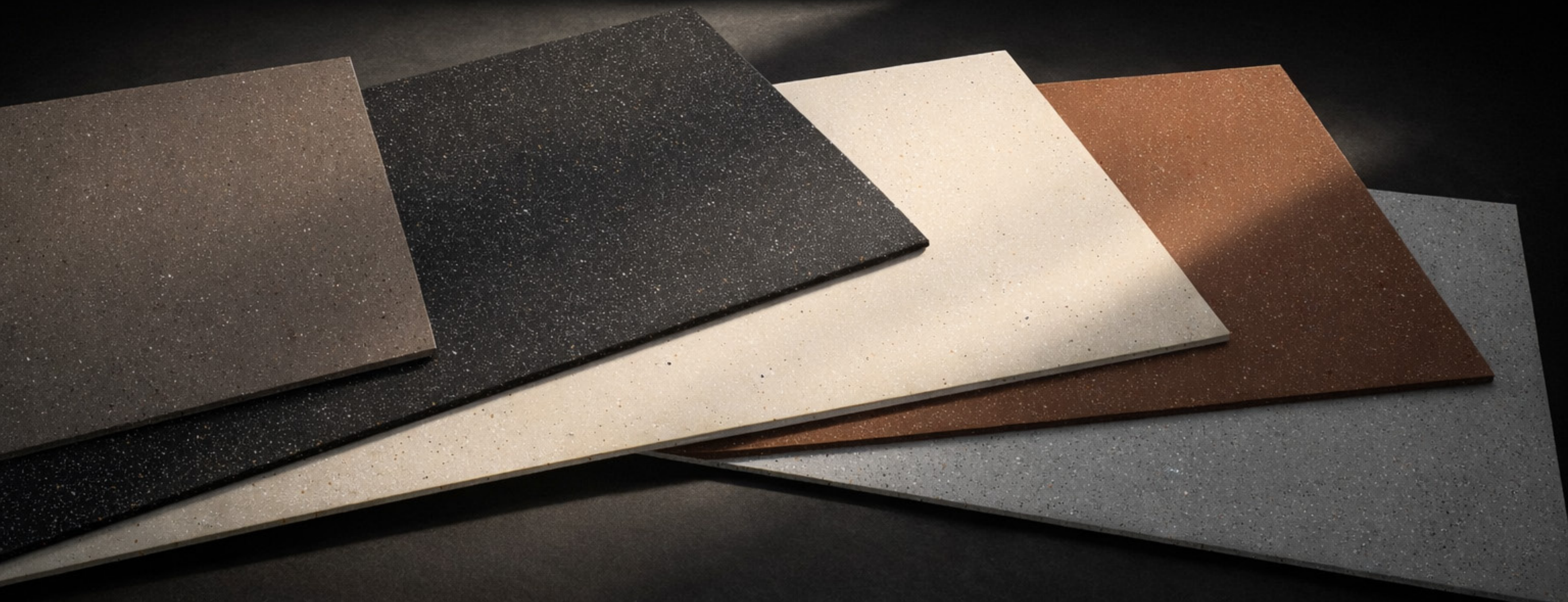
A SIGNATURE COLLECTION *for premium living*

Perfect for residences, hotels, malls, and showrooms, these slabs adapt effortlessly to any design language from minimal to ultra-luxury.

Whether you desire the high-shine brilliance of Glossy or the subtle sophistication of Tech Matt, both finishes are crafted to deliver beauty without compromising on durability.

Built to endure heavy foot traffic and demanding environments, these slabs offer exceptional load-bearing capacity with zero compromise on style.

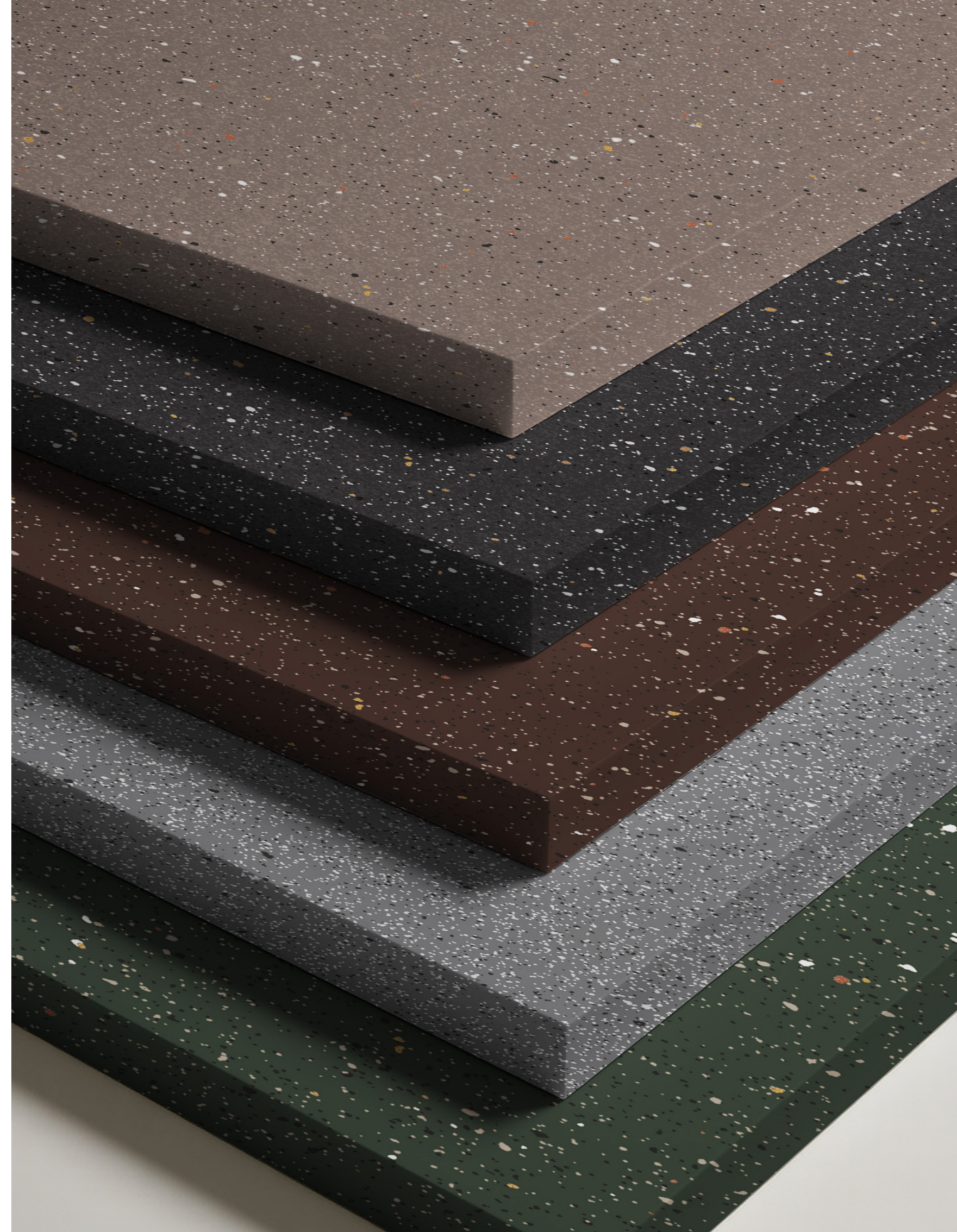
The extended slab sizes allow designers to create continuous surfaces that feel expansive, premium, and architecturally refined.



BUILT TO LAST *Styled To Impress*

Our full body slab tiles are designed to become an integral part of architectural expression. With their large format and refined detailing, these surfaces enhance spatial continuity, creating interiors that feel expansive, balanced, and visually powerful. Every slab contributes to a sense of structure, harmony, and modern sophistication.

Each slab is the result of advanced engineering processes combined with thoughtful design. High-pressure compaction and controlled firing ensure exceptional strength, dimensional stability, and surface consistency. This fusion of design and technology allows architects and designers to achieve ambitious concepts without compromising on performance.



Where Advanced Engineering Meets Refined Design Excellence

Dynamic and striking marble patterns, designed by nature

SPECKLE
COLLECTION



WHERE CREATIVITY IS SUPPORTED BY TECHNOLOGY.

Luxury today is not defined by excess, but by refinement. The seamless appearance of large format slabs, combined with premium finishes, delivers a subtle yet impactful visual presence. These surfaces do not overpower a space—they elevate it with quiet confidence and timeless appeal.

Whether installed in high-traffic commercial areas or refined residential interiors, these slabs are built to perform under pressure. Their full body structure ensures durability, resistance to wear, and long-term reliability, making them an intelligent choice for both aesthetic and functional applications.

A New Standard of Strength, Scale, and Surface Perfection

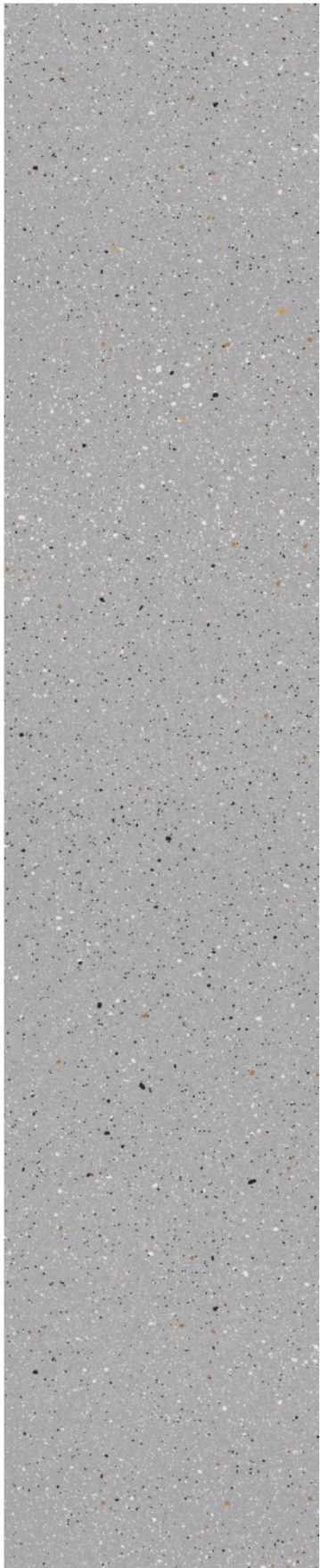
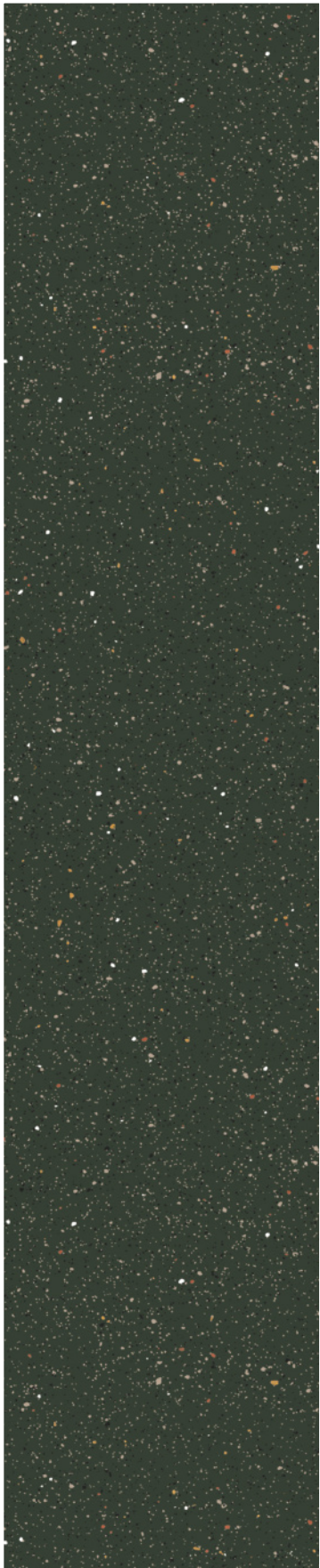
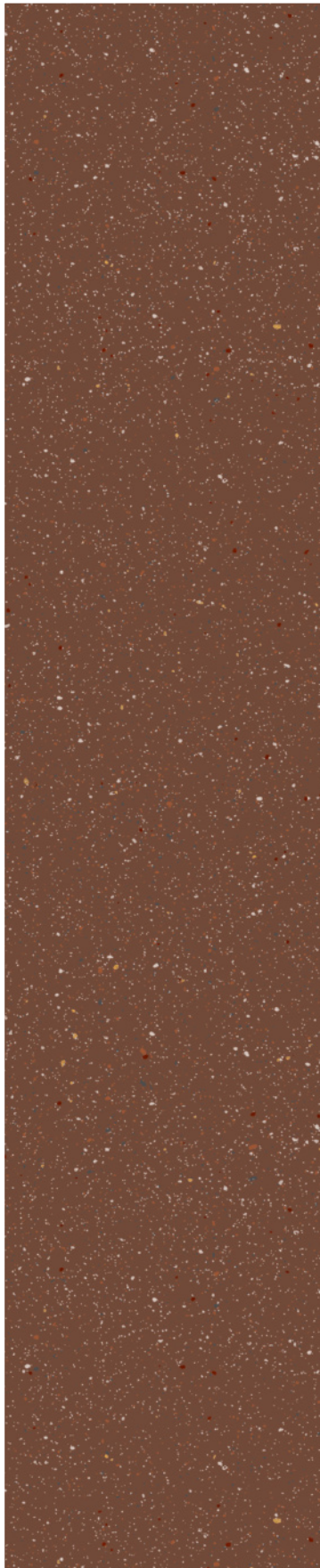
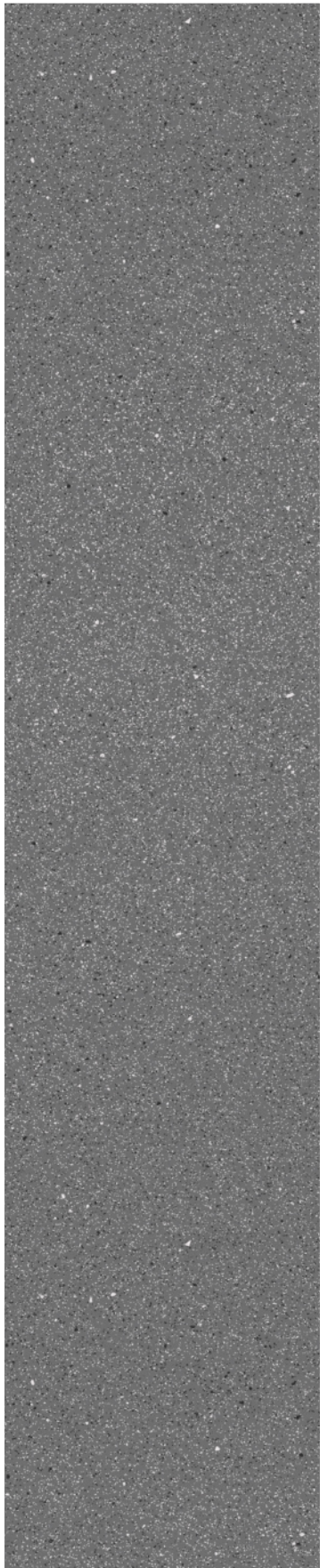
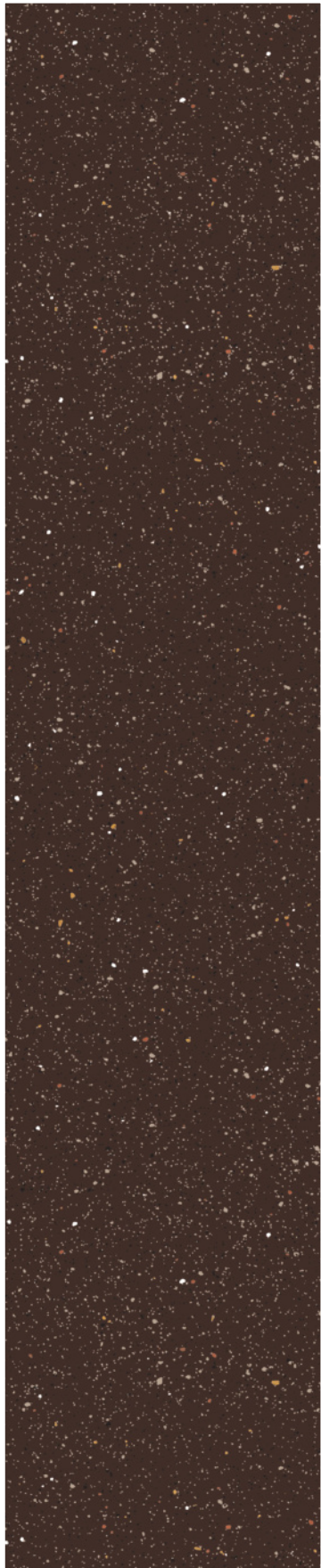
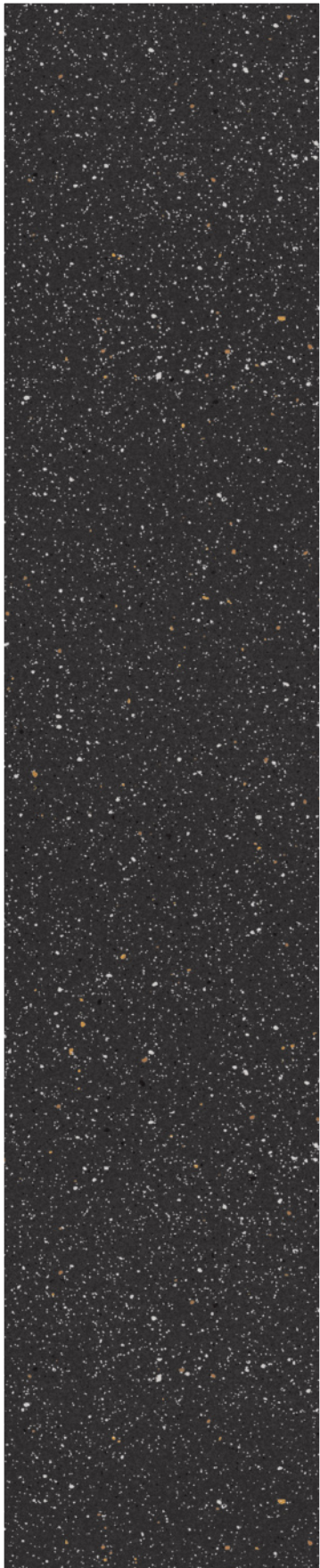
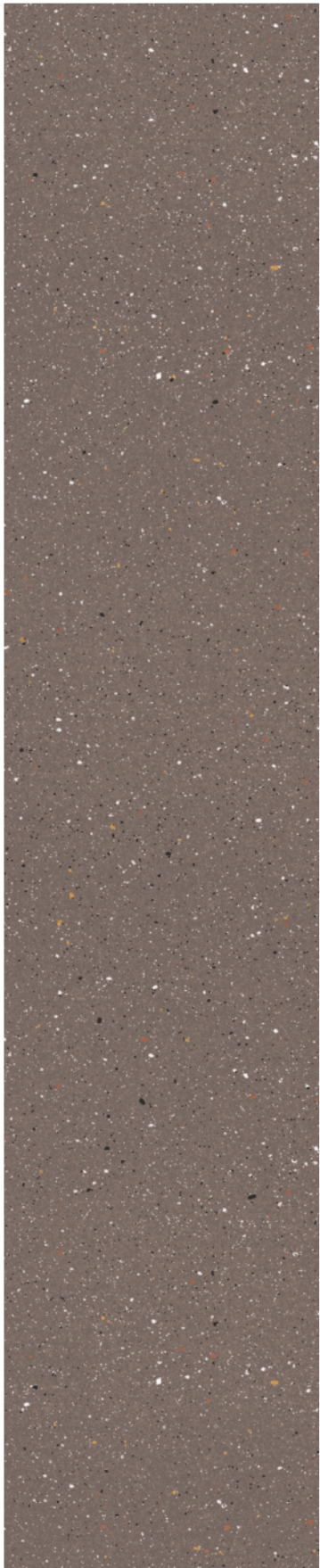
Redefining Architectural Surfaces Through
Large Format Full Body Slab Innovation

Modern spaces demand materials that adapt to evolving lifestyles. These slabs offer versatility across walls, floors, and feature applications, supporting both minimal and bold design languages while maintaining a consistent sense of elegance.



PRODUCT RANGE

TAP ON
SLAB DISCOVER
YOUR MATCH



SPECKLE BARLEY

SPECKLE BLACK

SPECKLE CHOCO

SPECKLE CREMA

SPECKLE GREY

SPECKLE LAVA

SPECKLE MOSS

SPECKLE SMOKE

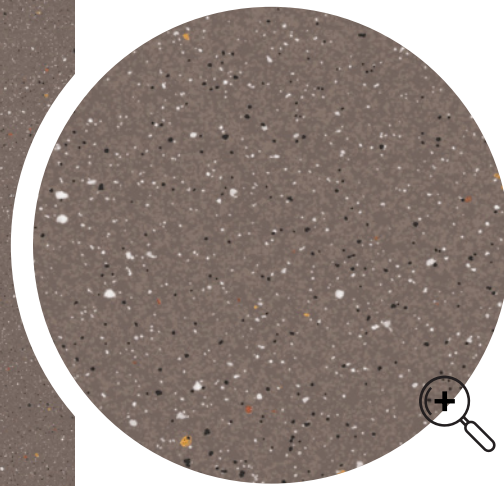
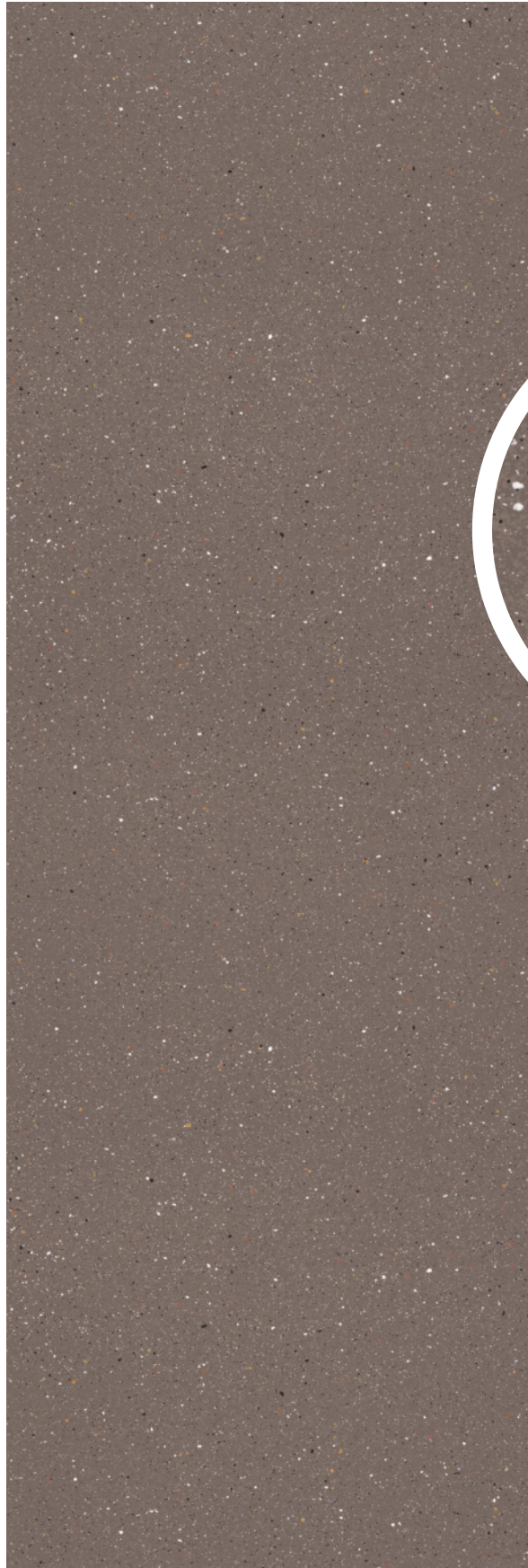
SPECKLE SNOW

| SPECKLE BARLEY

SIZE • 80X240CM | 80X300CM

FINISH • POLISHED | TECH MATT

THICKNESS • 15 MM





| SPECKLE BARLEY

FULL BODY

| POLISHED / TECH MATT

| 80X240 CM / 80X300 CM

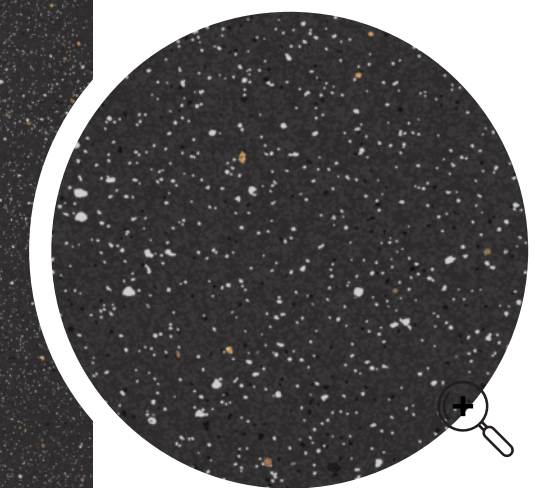


| SPECKLE BLACK

SIZE • 80X240CM | 80X300CM

FINISH • POLISHED | TECH MATT

THICKNESS • 15 MM





| SPECKLE BLACK

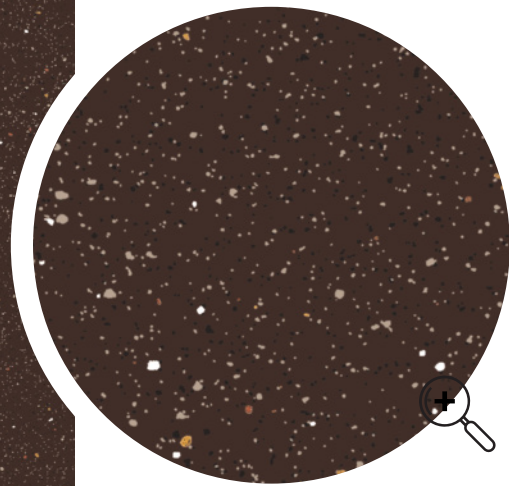
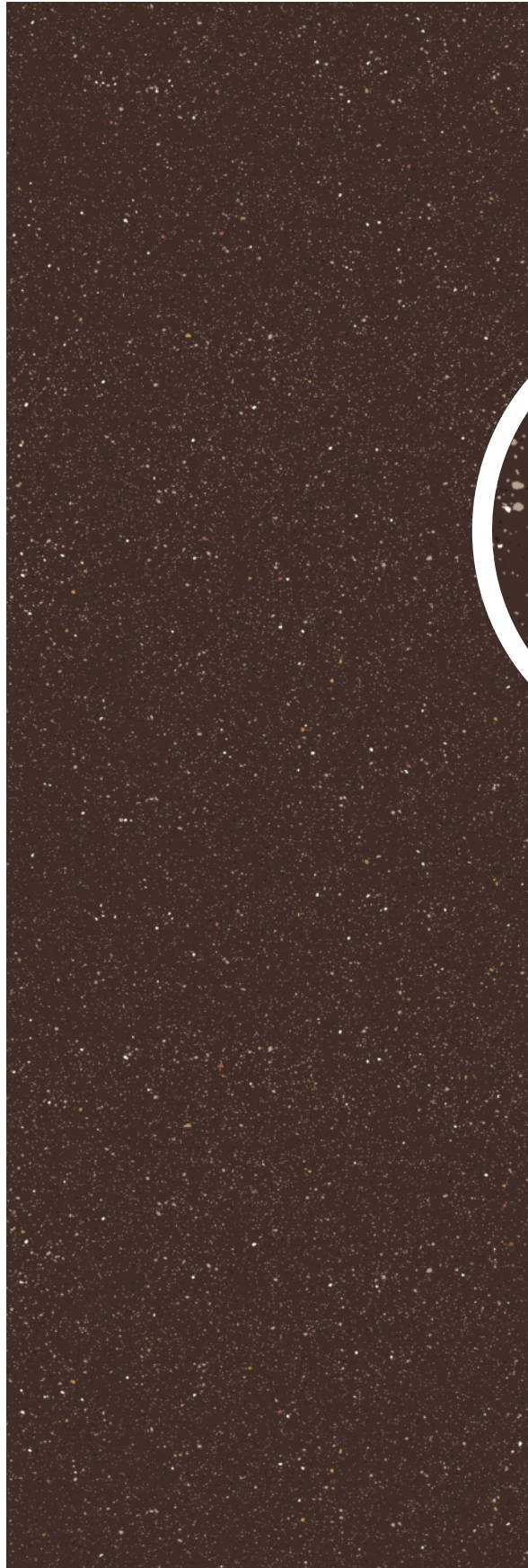
FULL BODY | POLISHED / TECH MATT | 80X240 CM / 80X300 CM

| SPECKLE CHOCO

SIZE • 80X240CM | 80X300CM

FINISH • POLISHED | TECH MATT

THICKNESS • 15 MM





| SPECKLE CHOCO

FULL BODY

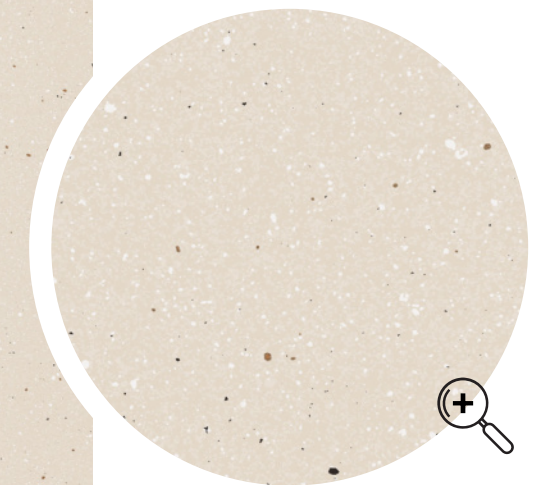
| POLISHED / TECH MATT

| 80X240 CM / 80X300 CM



| SPECKLE CREMA

SIZE • 80X240CM | 80X300CM
FINISH • POLISHED | TECH MATT
THICKNESS • 15 MM





| SPECKLE CREMA

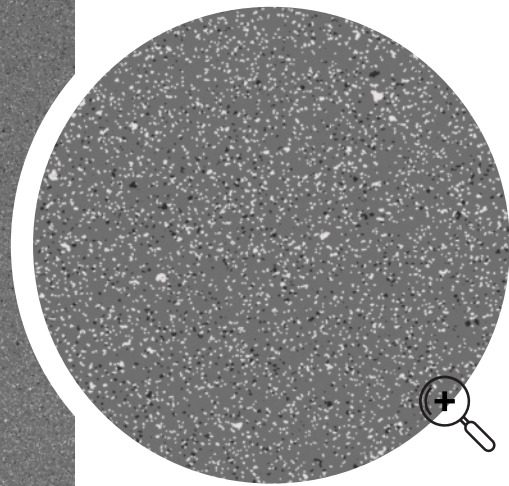
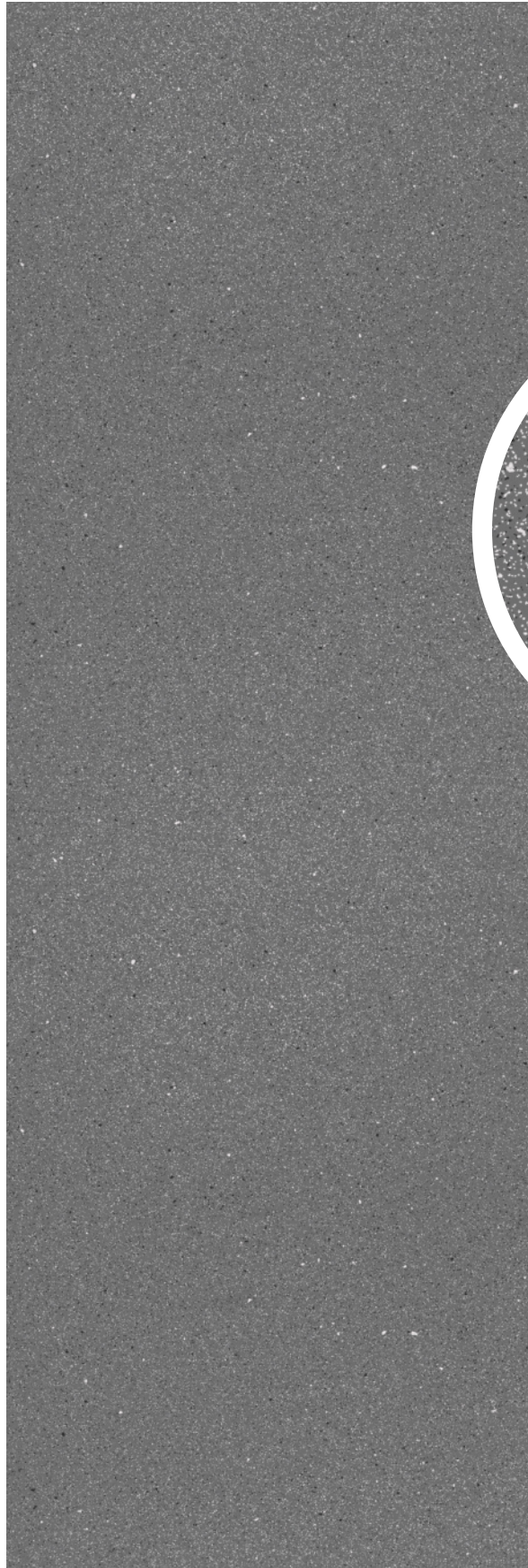
FULL BODY | POLISHED / TECH MATT | 80X240 CM / 80X300 CM

| SPECKLE GREY

SIZE • 80X240CM | 80X300CM

FINISH • POLISHED | TECH MATT

THICKNESS • 15 MM





| SPECKLE GREY

FULL BODY

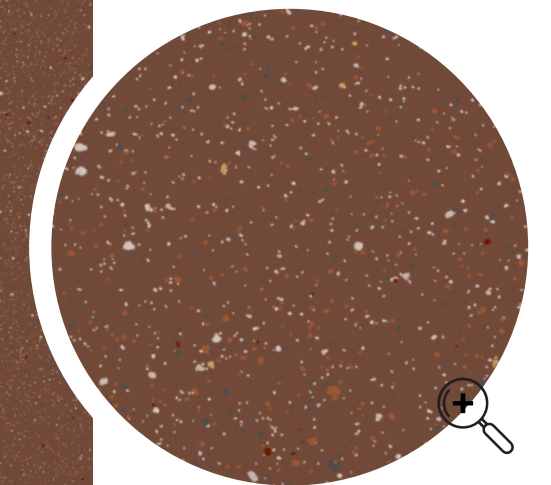
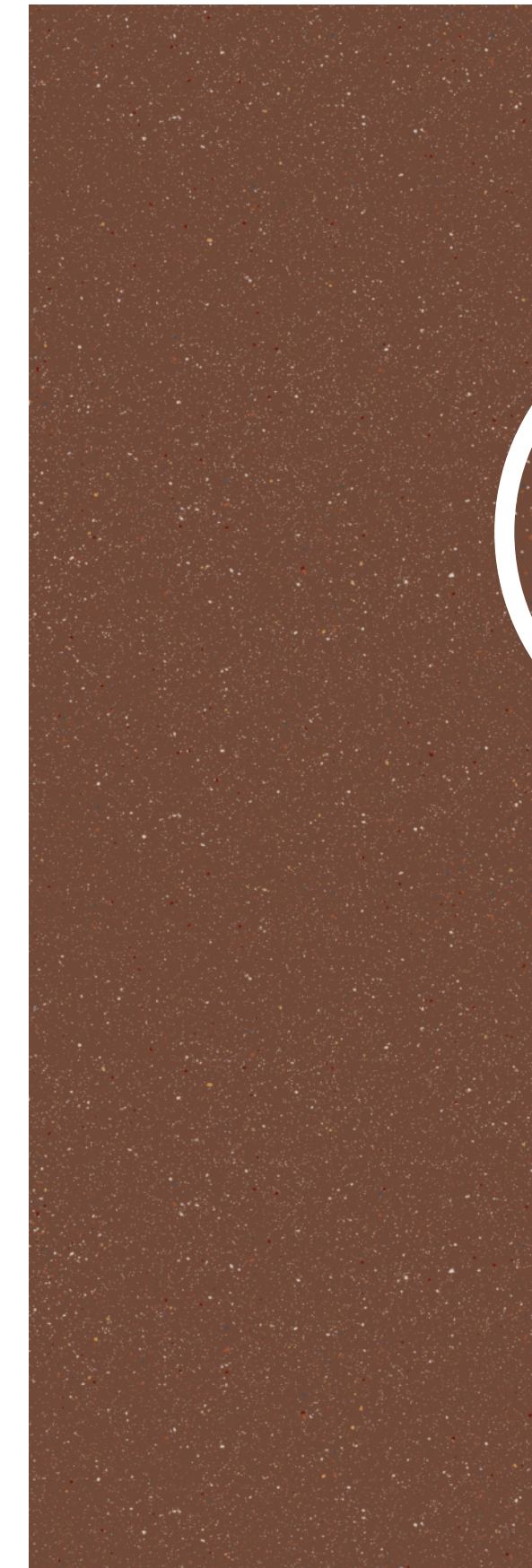
| POLISHED / TECH MATT

| 80X240 CM / 80X300 CM



| SPECKLE LAVA

SIZE • 80X240CM | 80X300CM
FINISH • POLISHED | TECH MATT
THICKNESS • 15 MM





| SPECKLE LAVA

FULL BODY

| POLISHED / TECH MATT

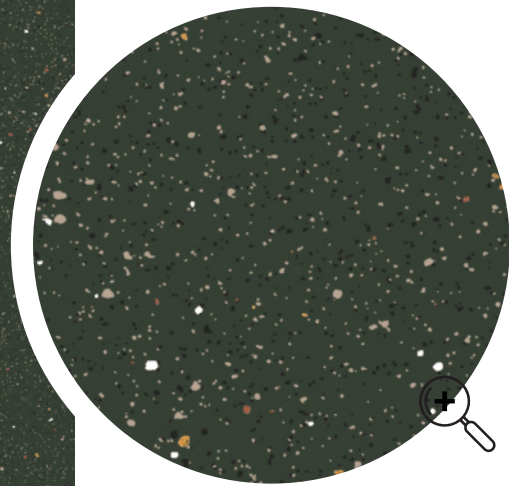
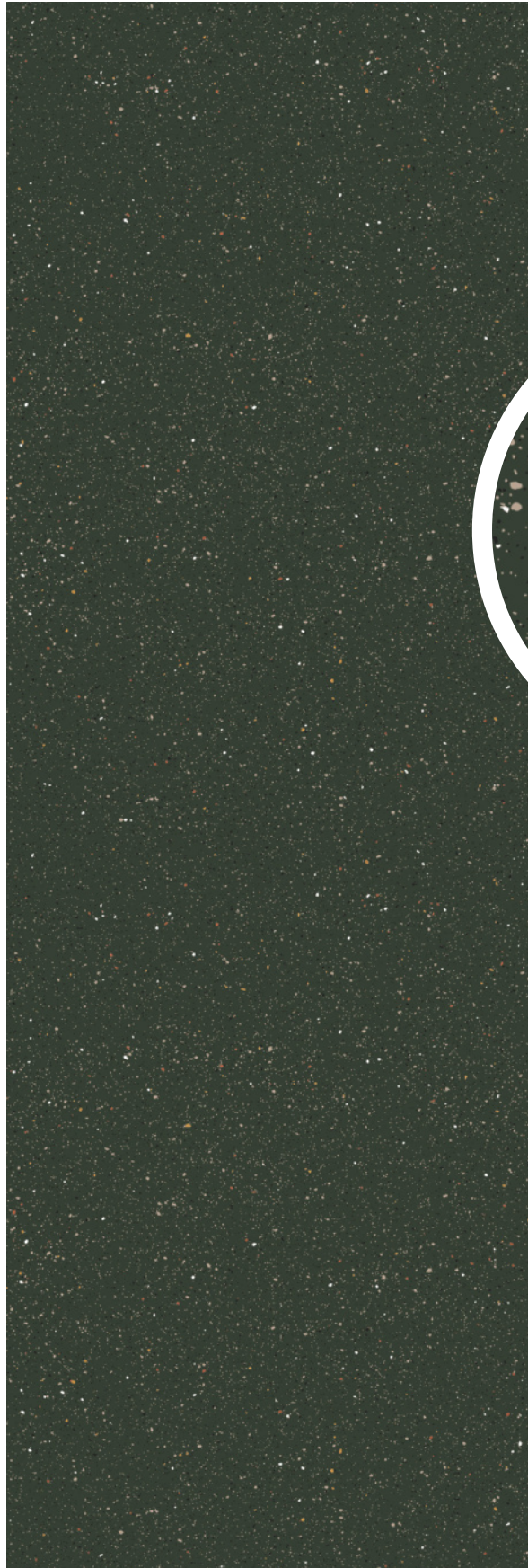
| 80X240 CM / 80X300 CM

| SPECKLE MOSS

SIZE • 80X240CM | 80X300CM

FINISH • POLISHED | TECH MATT

THICKNESS • 15 MM





| SPECKLE MOSS

FULL BODY

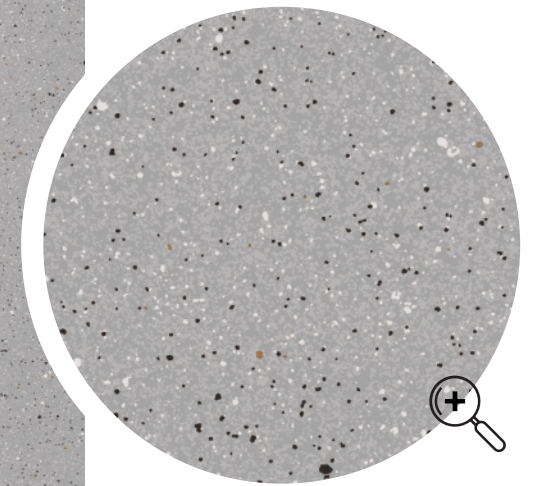
| POLISHED / TECH MATT

| 80X240 CM / 80X300 CM



| SPECKLE SMOKE

SIZE • 80X240CM | 80X300CM
FINISH • POLISHED | TECH MATT
THICKNESS • 15 MM





| SPECKLE SMOKE

FULL BODY

| POLISHED / TECH MATT

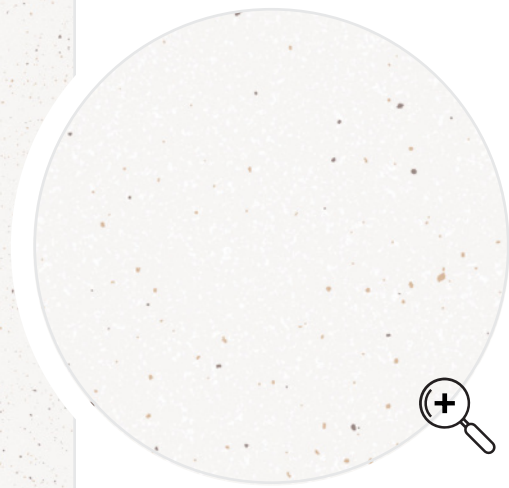
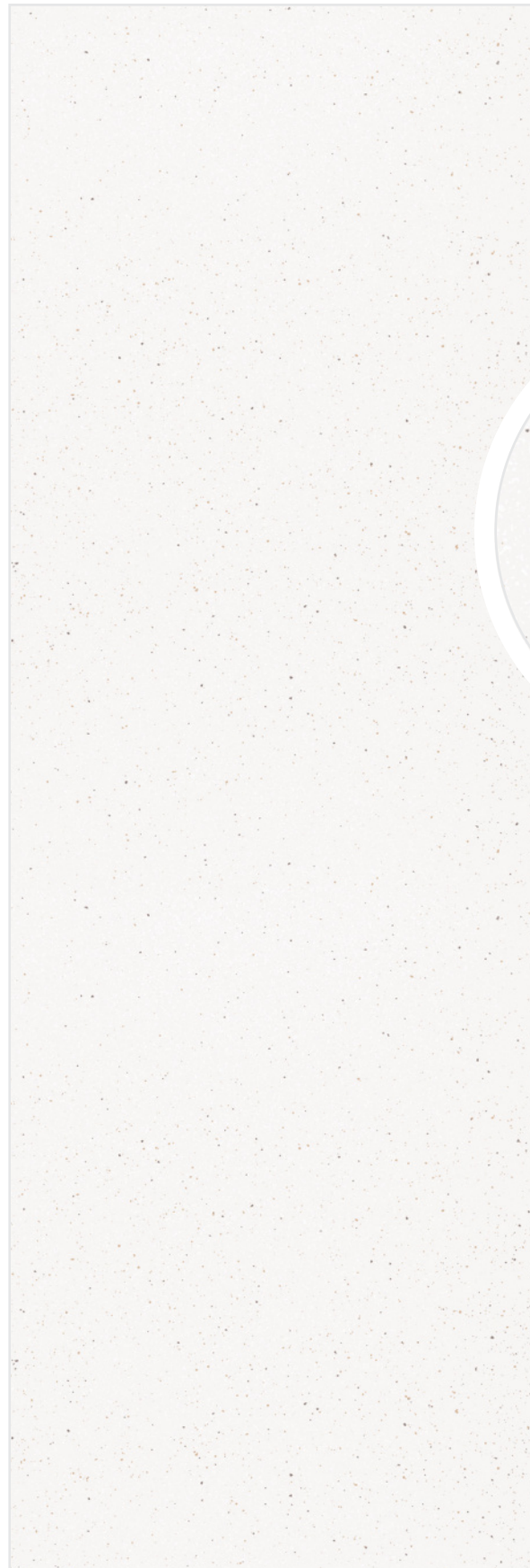
| 80X240 CM / 80X300 CM

| SPECKLE SNOW

SIZE • 80X240CM | 80X300CM

FINISH • POLISHED | TECH MATT

THICKNESS • 15 MM





| SPECKLE SNOW

FULL BODY

| POLISHED / TECH MATT

| 80X240 CM / 80X300 CM

Technical information

General information

This slabs in sizes 80x300 cm (15 mm thick) & 80x240 cm (15 mm thick) are made of porcelain stoneware that is rectified and wedged and has a single size grade. As far as technical performance is concerned, they are manufactured in compliance with the EN ISO 14411 ISO 13006 Annex G standards for group B1A material.

Packaging

Rock slabs are not boxed but rather arranged loose inside crates or on trestles, according to the data given in the table on. Only crates can be used for the 80x3.00cm size slab. For more details, please refer to the Technical Manual.

Transport and unloading

During transport, Caesar recommends you not to stack other types of pallet onto the cases containing these products. It is also recommended to use elevator and forklift trucks of dimensions that are suitable for handling the above mentioned pallets. As far as cases containing 80x300 cm are concerned, if you are lifting the case from its short side, it is recommended to use forks with a length of 2400 mm. For cases containing 80x240 cm slabs, it is recommended to widen the forks as far as is possible in order guarantee effective support of the case: if you are lifting the case from its short side, it is recommended to use forks with a length of at least 2800 mm.

Checking material

Fitters must always check material before installation, by placing a few slabs on the floor and making sure that they correspond to specifications both technical and aesthetic. Fitters should also ensure that the slabs are in good condition; please remember than any complaints relating to visible faults on slabs that have been installed will not be taken into consideration.

Handling slabs at the work site

Rock slabs have considerable dimensions and weight. This means that some precautions must be taken to guarantee safe work and avoid breakage of the slabs. For handling and subsequent installation, Caesar recommends the use of suitable equipment, namely a special handling frame, featuring suction cups for lifting the slabs, and, if necessary, a trolley with wheels for transporting heavy weights (approx. 83 kg plus the weight of the adhesive for 80x300 slabs). It is recommended to pay particular attention during movement of each single slab: owing to the considerable dimensions, be particularly careful in order to prevent breakage caused by collision of excessive bending. In particular, for sizes 80x300 and 80x240, it takes at least four qualified operators to take the slab out of the case and move it in the work site area. All operations must be performed in compliance with the local standards for health and safety at work, in particular those relating to handling of heavy weights and particularly troublesome sizes; the use of a frame with telescopic arms facilitates extraction of the slabs at the bottom of the case.

Cutting and drilling

To cut and drill a slab, Rock recommends you to place the slab on a work bench or flat surface made of non-slip material.

- Straight cuts: Rock slabs of sizes 80x300 cm, 80x240 cm can be cut using a cutting guide with engraving trolley featuring suction cups, cutting-off pliers and a diamond pad. Place the slab on the cutting guide, establish the contour of the portion to remove and trace it out, making sure to lock the cutting guide in place using the special suction cups it is fitted with. During engraving, it is recommended to start with two engravings of about 5 cm, at the two ends of the slab. Proceed moving from the inside to the outside; you can then complete engraving by joining these two segments. Now perform splitting using pliers. Make sure to begin your work starting from the two ends. It is then recommended to smooth the cut edge using a diamond pad. In the event of straight cuts close to the edge, it is possible to use an angle grinder, which must be appropriately secured to the guide.
- Corner cutting: corner cutting can be performed in the same manner described for straight cuts close to the edge. Make sure to position the angle grinder based on the corner cut to perform.
- L-shaped cuts: for this type of work, use an angle grinder with a diamond disc and a diamond tool for wet drilling. Start by drilling a hole with a diameter of 7/8 mm, near to the portion to remove. Continue your work using the angle grinder. Provide two engravings of about 5 cm at the two ends of the same portion. Complete by joining the hole to the engraving. Work moving from the centre to the end.
- Rectangular holes: as described for L-shaped cuts, the tools needed are an angle grinder with diamond disk and a diamond tool for wet drilling. Before cutting, use the diamond tool to drill holes with a diameter of 7/8 mm in the points at the ends of the cutting area. You can complete your work by joining the holes using the angle grinder with diamond disc.
- Holes: you can drill material by using a screwdriver and diamond tools for wet drilling (cutting discs). During drilling, make sure that the area involved in kept wet. Once the hole has been completed, finish off the surface with an angle grinder with diamond disc.

List of equipment for handling, cutting and drilling:

- frame for handling featuring suction cups for lifting the slab and, if necessary, trolley for transport;
- work bench of a suitable size;
- cutting guide with engraving trolley;
- cutting off pliers;
- diamond pad;
- angle grinder with diamond disc;
- diamond tool for wet drilling (cutting disc);
- screwdriver.

Recommendations for installation on a screed for wall tiling (all types of slab)

As reference, we recommend you to consult the UNI 11493 standard that sets forth the rules for installation of interior and exterior floor and wall coverings.

Before beginning installation, check that the substrate for installation has been prepared and built in compliance with the intended use and has been correctly prepared for the use of adhesive.

If the case of cement-based screeds, for floor and wall installation, check that the substrate features no cracks, that it is perfectly dry and that hygrometric shrinkage has ended. Make sure that there is no damp or water seepage that could cause the slabs to dislodge. Clean the surface to remove dust, dirt, oil and grease. Before installation, check the flatness of the substrate and compensate for any hollows with suitable levelling products.

Use category "C2 E" or superior adhesives, as envisaged by the EN 12004 standards; for wall tiling, use products with limited vertical slippage (identified by the letter T or in compliance with the EN 12004 standard).

Adhesive must be applied with the double spreading technique, in order to ensure correct distribution of the adhesive itself, guarantee excellent adhesion and avoid air gaps that can lead to breakage. The adhesive must be spread full-bed on the supporting surface, using a notched trowel (10 mm gap between notches). Make sure that the stripes of the last layer of adhesive have a single direction, parallel to the short side of the slab. The application of adhesive on the rear side of the slab must be performed using a notch with 3 mm notches. The slab must be secured in upright position to the handling frame. Using the frame, you can thus correctly position the slab and install it accordingly. To eliminate any air and guarantee better adhesion, when installing make the slab performs a circular movement.

After installation, it is recommended to tap the surface with a special mallet. Proceed from the centre to the sides, parallel to the short side, to ensure effective elimination of air. Consider the use of levelling systems to improve flatness of the surfaces. In order to improve aesthetic performance and practicality, Caesar recommends a grouting joint of at least 2 mm and use of spacer crosses. The grain size of the jointing material must be suitable for the width of the joint. Joints must be filled up to treading level in order to create a continuous surface. Position expansion joints at a regular distance and leave a gap of at least 5 mm between tiled surface and walls (or pillars). In any case, provision of expansion joints must be calculated by the person in charge of the building site.

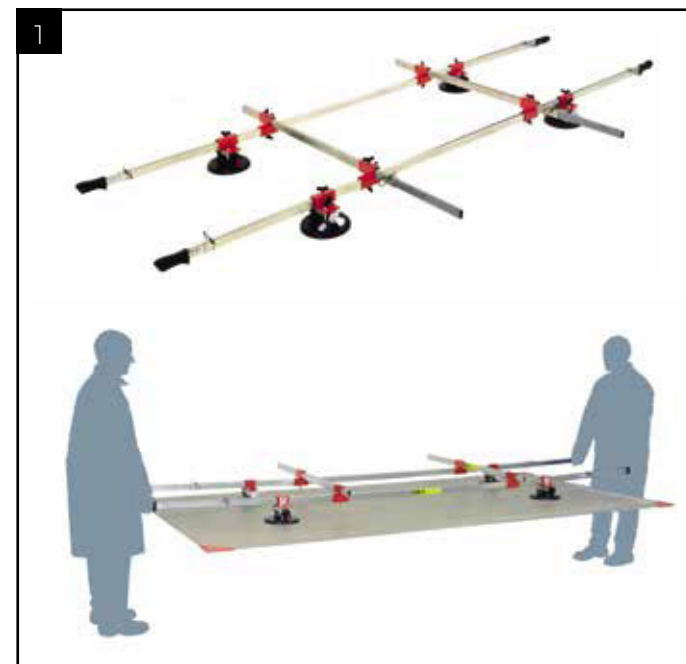
All notes above are a necessary addition to the rules of the trade.

Installation of 15 mm thick slabs

Rock recommends the installation of 15 mm thick extra large slabs only in the following conditions: residential environments, commercial environments that are subject to light traffic and in any case in contexts where there is no regular passage of heavy loads or circulation of trolleys with hard wheels. The range of 15 mm thick extra large slabs is suitable for installation on existing floors: the slabs can be installed on old floors or marble, natural stone and ceramic claddings, without the need to demolish the existing underlying floor. **ATTENTION:** it is not recommended to install these slabs on a screed directly, since the results of installation strictly relate to the condition - excellent - of the screed, to its seasoning, to the provision of expansion joints, as well as to perfect installation in accordance to "the rules of the trade". In these cases, Rock recommends the use of porcelain stoneware with a conventional thickness.

Care and cleaning

In order to make routine maintenance easier, it is recommend to wash the surface with an acid detergent 36-48 hours from grouting. Use an acid product that is suitable for porcelain stoneware. For more information, visit the www.rockgranito.com website.



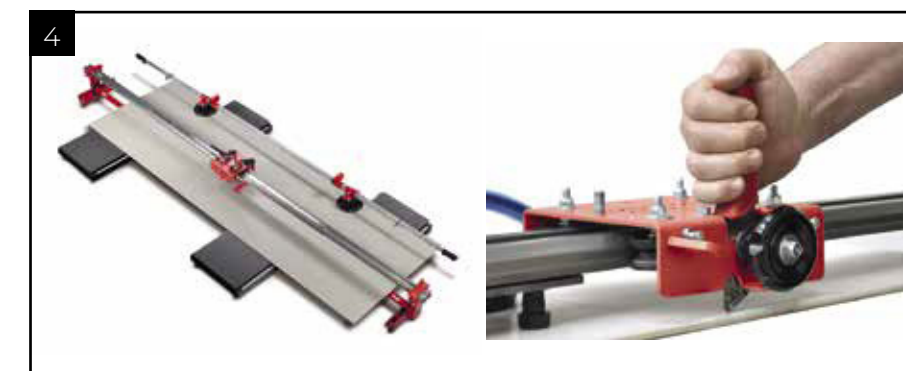
1. Handling frame equipped with suction cups



2. Wheeled trolley for transport



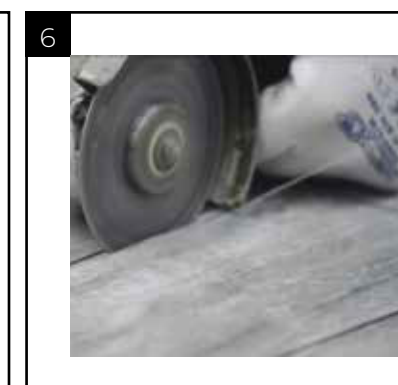
3. Working table



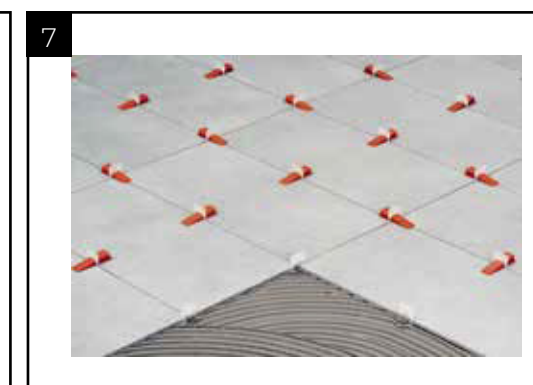
4. Guide with cutting carriage



5. Diamond tool for wet drilling



6. Grinder equipped with diamond disk



7. Surface levelling systems



CLEANING & MAINTENANCE

Our products are non porous (due to their high quality raw materials, stringent production parameters and state of the art technology), hence any dust or deposited waste cannot penetrate the surface.

For most cases only a damp cloth is sufficient for cleaning.

Regular cleaning highlights the aesthetic features of the surface and gives it exceptional shine.

For highly aggressive cleaning caused by some common food and substances follow the table below.

| Type Of stain | Chemical Product | Example |
|---------------|--------------------|--|
| Grease | Alkaline - Solvent | Detergent |
| Oil | Solvent | Ammonia, Baking Soda |
| Ink | Oxidant - Solvent | Alcohol, Liquid Bleach, Nail Paint Remover |
| Rust | Acid | Hydrochloric Acid, Vinegar, Red Harpic |
| Lime | Acid | Descaling Reagent, Hydro Chloric Acid |
| Cement | Acid | Hydro Chloric Acid |
| Wine | Alkaline | Ammonia, Liquid Bleach |
| Coffee | Alkaline - Solvent | Ammonia, Liquid Bleach |
| Rubber | Solvent | Alcohol, Thinner |
| Plaster | Acid | Hydro Chloric Acid |
| Candle Wax | Solvent | Alcohol, Thinner |
| Iodine | Oxidant | Liquid Bleach |
| Blood | Oxidant | Liquid Bleach |
| Ice Cream | Alkaline | Liquid Bleach |

Note: It is recommended that any kind of stain needs to get clean immediately / as soon as possible.

TECHNICAL SPECIFICATIONS

| CHARACTERISTICS | STANDARD AS PER ISO-13006/2018 En14411 gr.bla | ROCK VALUE | TEST METHOD |
|--------------------------------------|---|---------------------------|--------------|
| Regulatory Properties | | | |
| Deviation in Length & Width | ± 0.5% | ± 0.2% | ISO 10545-2 |
| Deviation in Thickness | ± 5% | ± 5% | ISO 10545-2 |
| Straightness of Sides | ± 0.5% | ± 0.2% | ISO 10545-2 |
| Rectangularity | ± 0.5% | ± 0.2% | ISO 10545-2 |
| Surface Flatness | ± 0.5% | ± 0.3% | ISO 10545-2 |
| Colour Difference | ΔE<1.00 | ΔE<0.30 | ISO 10545-16 |
| Glossiness | As per Mfg. | As Per Mfg. | Gloss Meter |
| Regulatory Properties | | | |
| Water Absorption | ≤ 0.5 % | ≤ 0.03 % | ISO 10545-3 |
| Apparent Density | As per Mfg. | >2.20 g/cc | ISO 10545-3 |
| Massive Mechanical Properties | | | |
| Modulus of Rupture | Min.35N/mm ² | Min.40N/mm ² | ISO 10545-4 |
| Breaking Strength | Min.1300 N | Min. 7000 N | ISO 10545-4 |
| Impact Resistance | As per Mfg. | Min. 0.55 | ISO 10545-4 |
| Surface Mechanical Properties | | | |
| Surface Abrasion Resistance | As per Mfg. | Min. class 3 | ISO 10545-7 |
| Mohs Hardness | As per Mfg. | Min. class 4 | BS EN 15771 |
| Massive Mechanical Properties | | | |
| Frost Resistance | As per Mfg. | Frost Proof | ISO 10545-12 |
| Thermal Shock Resistance | Min. 10 Cycle | Min. 10 Cycle | ISO 10545-9 |
| Moisture Expansion | Max. 0.6mm/m | Max. 0.2mm/m | ISO 10545-10 |
| Thermal Expansion | Max. 9.0 x 10 ⁻⁶ | Max. 6.0x10 ⁻⁶ | ISO 10545-8 |
| Chemical Properties | | | |
| Chemical Resistance | As per Mfg. | No Damage | ISO 10545-13 |
| Stain Resistance | Resistant | Resistant | ISO 10545-14 |
| Safety Properties | | | |
| Slip Resistance | As per Mfg. | N.A. | DIN 51130 |
| Fire Resistance | As per Mfg. | Fire Proof | N.A. |

PACKING DETAILS

| Dimension (mm) | No. of Pcs/Box | Square Feet | Weight (Approx) |
|----------------|----------------|--------------|-----------------|
| 800x3000mm | 1 Pcs. | 25.83 Sq. ft | 83 kg. |
| 800x2400mm | 1 Pcs. | 20.67 Sq. ft | 68 kg. |

ROCK

ROCK SLABS LLP

Near Rock Granito Llp, Uchi Mandal,
Morbi (Gujarat) - 363642

www.rockgranito.com • info@rockgranito.com