

ROCK
SLABS

The Feel of Real Marble & Stone

FULLBODY BOOK
80x300cm, 80x240cm

Solid Collection

FOSTER

The Solid Collection is conceived to elevate spaces with a calm, confident presence, where simplicity becomes the ultimate expression of sophistication.

Rooted in modern living, these slabs respond to evolving lifestyles that demand versatility without visual clutter.

AMBIANCE

MIRRORING

Enduring form is achieved through thoughtful engineering. The fullbody construction ensures that beauty is not superficial but intrinsic.

Whether residential or commercial, the Solid Collection acts as a quiet foundation, supporting bold furniture and architecture plans.

MODERN

LIFESTYLE AND

The collection is minimalist by design and powerful in performance.

ENDURING

The collection redefines permanence and purity, with solid colors and monumental scale.

FORM

Designed for those who value balance, simplicity, and lasting appeal, the Solid Collection elevates everyday spaces into thoughtful environments.

www.rockgranito.com

ROCK SLABS

INSPIRATION



DURABILITY AND MIGHT

Toughness begins here



Design

Curated patterns mimic the finest natural stones, enhanced with intricate detailing and digital precision for aesthetic excellence.



Thickness and Edges

The 15mm thickness ensures structural integrity, while a range of edge profile possibilities allows for tailored styling to suit various applications and aesthetics.



Finishes

Offered in multiple finishes, each finish enhances the sensory and functional appeal of every space.



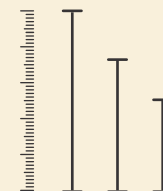
Versatile Applications

Rock Slabs perform brilliantly across kitchens, bathrooms, facades, and commercial counters, merging beauty, functionality, and durability.



Design Versatility

Perfect for contemporary and classic spaces, Rock Slabs effortlessly complement minimalist to maximalist spatial themes.



Massive Formats

Larger dimensions mean fewer joints, more visual continuity, and faster installations, making the collection ideal for luxury homes and commercial spaces.

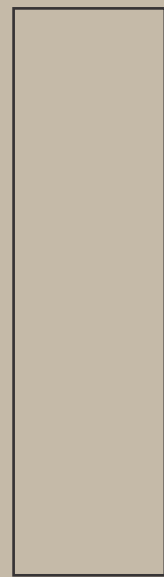
ROCK SLABS

COLOSSAL FORMATS

The expansive 80x300cm and 800x240cm formats minimize joints and maximize visual flow, creating uninterrupted surfaces that amplify spatial perception. These colossal dimensions are ideal for walls, floors, and feature applications where scale and continuity are paramount.

HEAVY DUTY THICKNESS

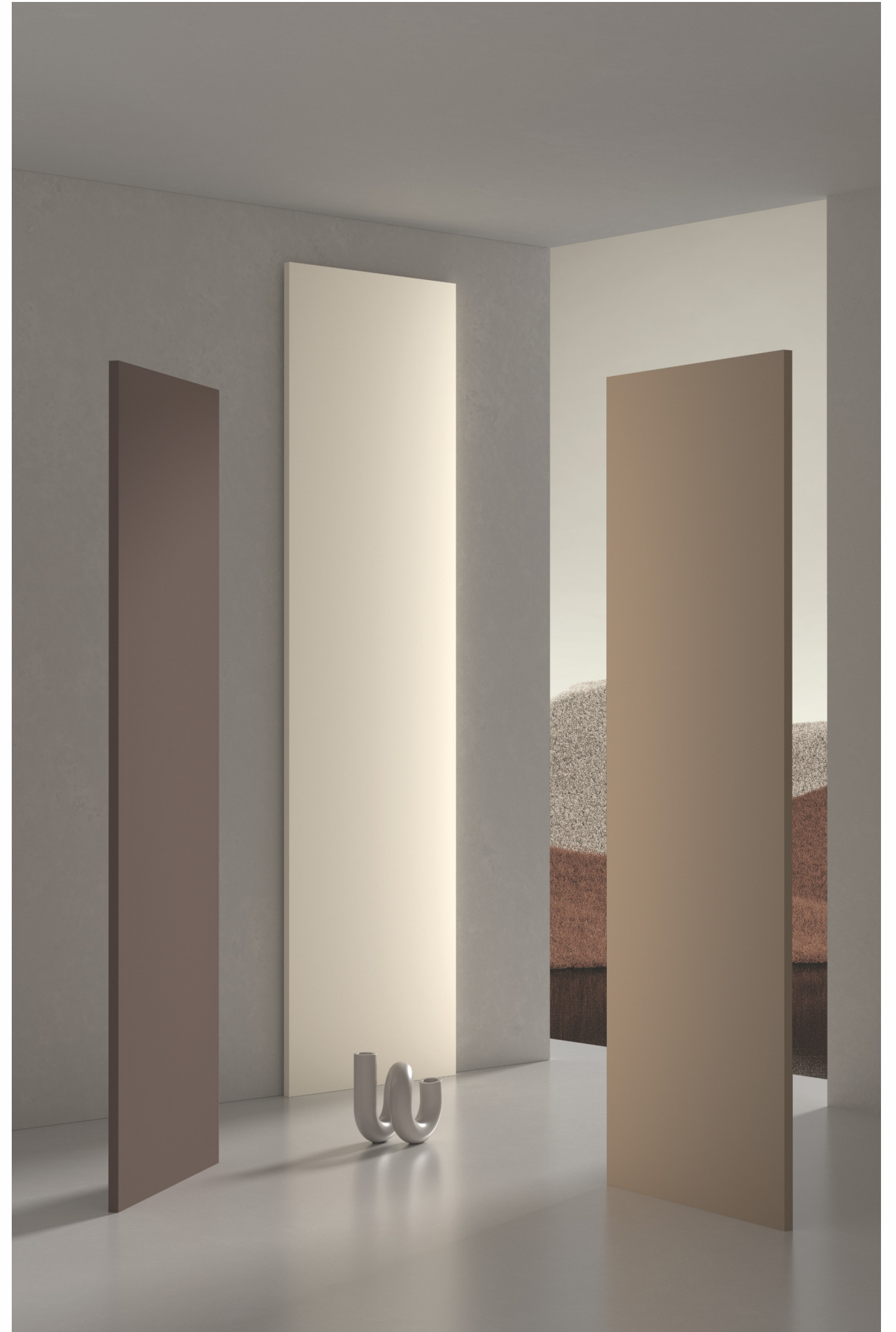
With a robust 15mm thickness, the Solid Collection is engineered for demanding applications. This substantial profile enhances load-bearing capacity, impact resistance, and long-term durability, making it suitable for high-traffic commercial and architectural environments.



80x
300cm

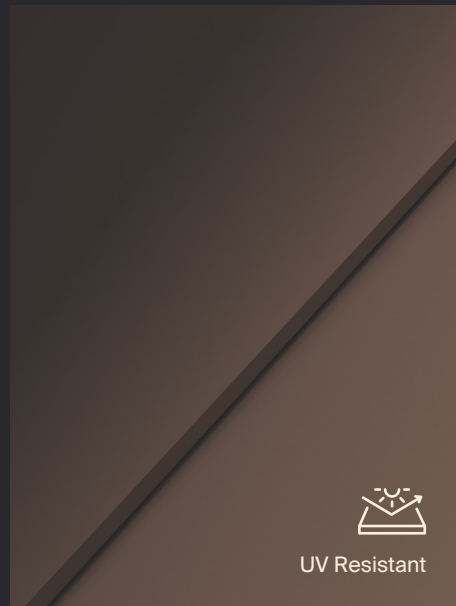


80x
240cm

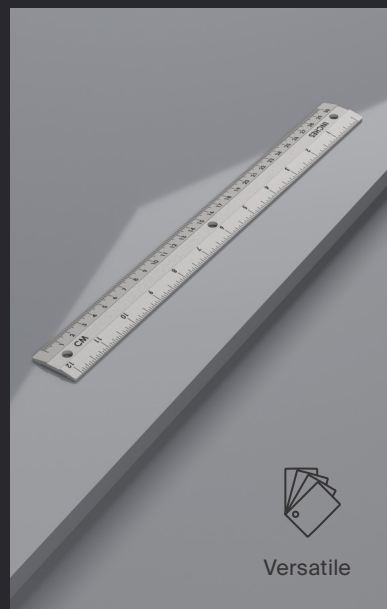




Durable



UV Resistant



Versatile



Safe and hygienic

why Rock Slabs?

Rock Slabs are designed to perform and engineered to impress. They combine cutting-edge technology with natural aesthetics for modern interiors and spaces.



Durable



Water-resistant



Stain-resistant



Safe and hygienic



Easy to clean



Simple to install



Versatile



Professionally crafted dimensions

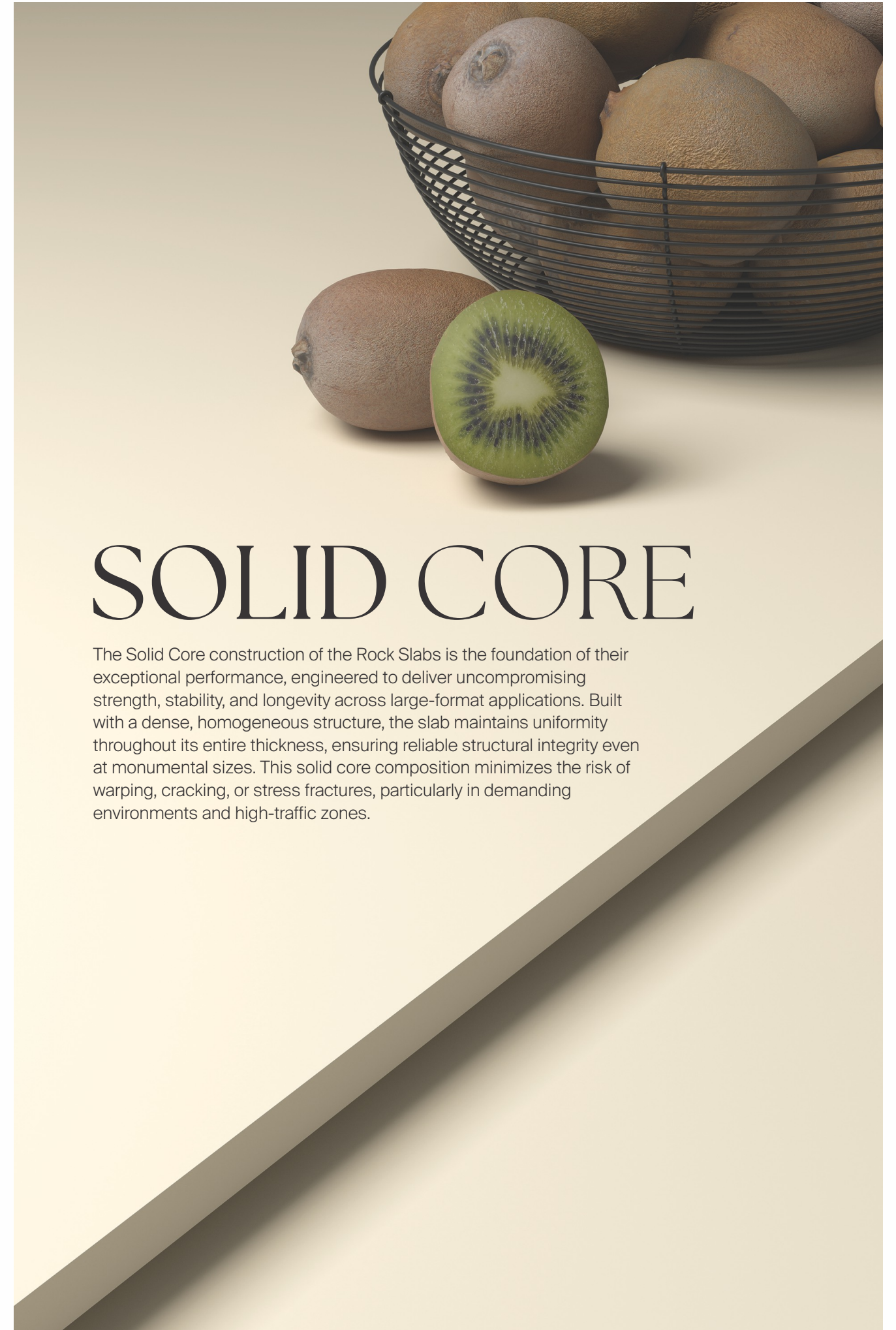


Premium surface finishes



FULLBODY STRENGTH

Fullbody construction ensures that strength and aesthetics are intrinsically unified, not merely surface-applied. The slab is manufactured with consistent material composition and color throughout its entire thickness, allowing the design to remain visually intact across cuts, edges, and detailed fabrications. This inherent uniformity significantly enhances durability, as wear, abrasion, or edge exposure does not compromise appearance over time.



SOLID CORE

The Solid Core construction of the Rock Slabs is the foundation of their exceptional performance, engineered to deliver uncompromising strength, stability, and longevity across large-format applications. Built with a dense, homogeneous structure, the slab maintains uniformity throughout its entire thickness, ensuring reliable structural integrity even at monumental sizes. This solid core composition minimizes the risk of warping, cracking, or stress fractures, particularly in demanding environments and high-traffic zones.

EXPERIENCE
RESILIENCE

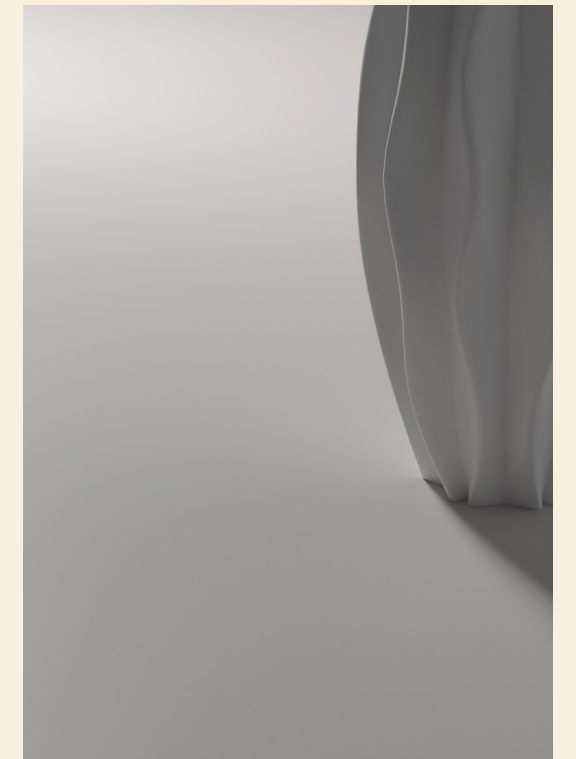
FINISHES

CLASSIC SURFACES FOR TIMELESS
ELEGANCE AND FUNCTIONALITY.

MATT

The Matt finish embodies refined minimalism, delivering an understated elegance through soft light diffusion and a smooth, non-reflective surface. By reducing glare and visual noise, it enhances the purity and depth of solid colors, creating calm, balanced environments that align seamlessly with modern interior sensibilities.

Beyond its aesthetic appeal, the Matt finish is engineered for everyday performance. It offers improved slip resistance, minimizes the appearance of fingerprints and smudges, and supports effortless maintenance, making it a practical choice for high-traffic areas.



GLOSSY

The Glossy finish delivers a bold, contemporary expression by introducing depth, brilliance, and reflective clarity. Its polished surface amplifies natural and artificial light, enhancing spatial brightness and creating a sense of openness and luxury.

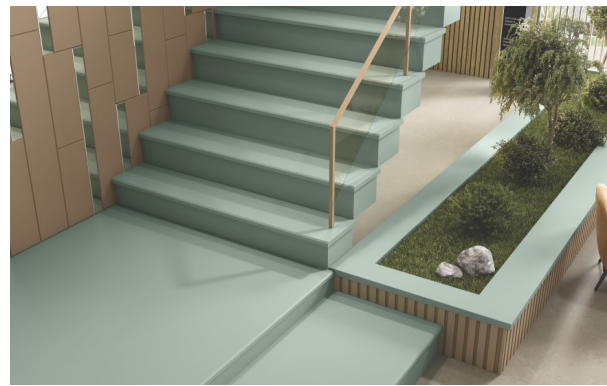
Designed to retain its lustre over time, the Glossy finish maintains exceptional smoothness and shine even under demanding conditions. Its durability makes it ideal for feature walls, premium interiors, and architectural spaces that seek visual prominence and refined elegance.

APPLICATIONS

The Solid Collection is suited for a wide spectrum of applications, including interior and exterior walls, flooring, countertops, worktops, dining tabletops, shelves, on stairs, TV units, as vanity tops, and large architectural surfaces, delivering consistent aesthetics, structural confidence, and design flexibility across residential, commercial, and institutional projects.



Shelves



Step & Riser



Floor



Wall



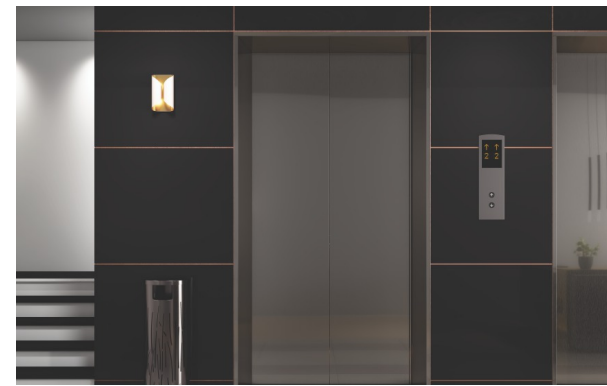
Kitchen Island



Garden Border



Dining Tabletop



Lift Door Frame



Reception Desk



Tabletop



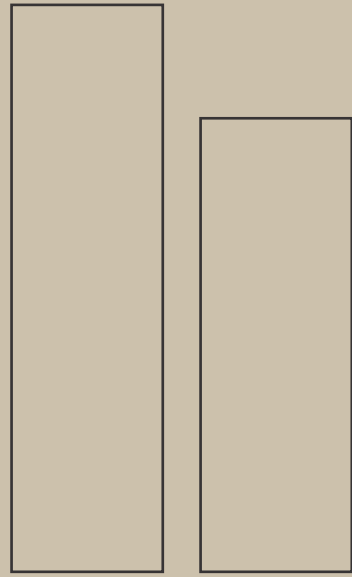
Vanity Top



TV Unit



Furnishing



80x
300cm

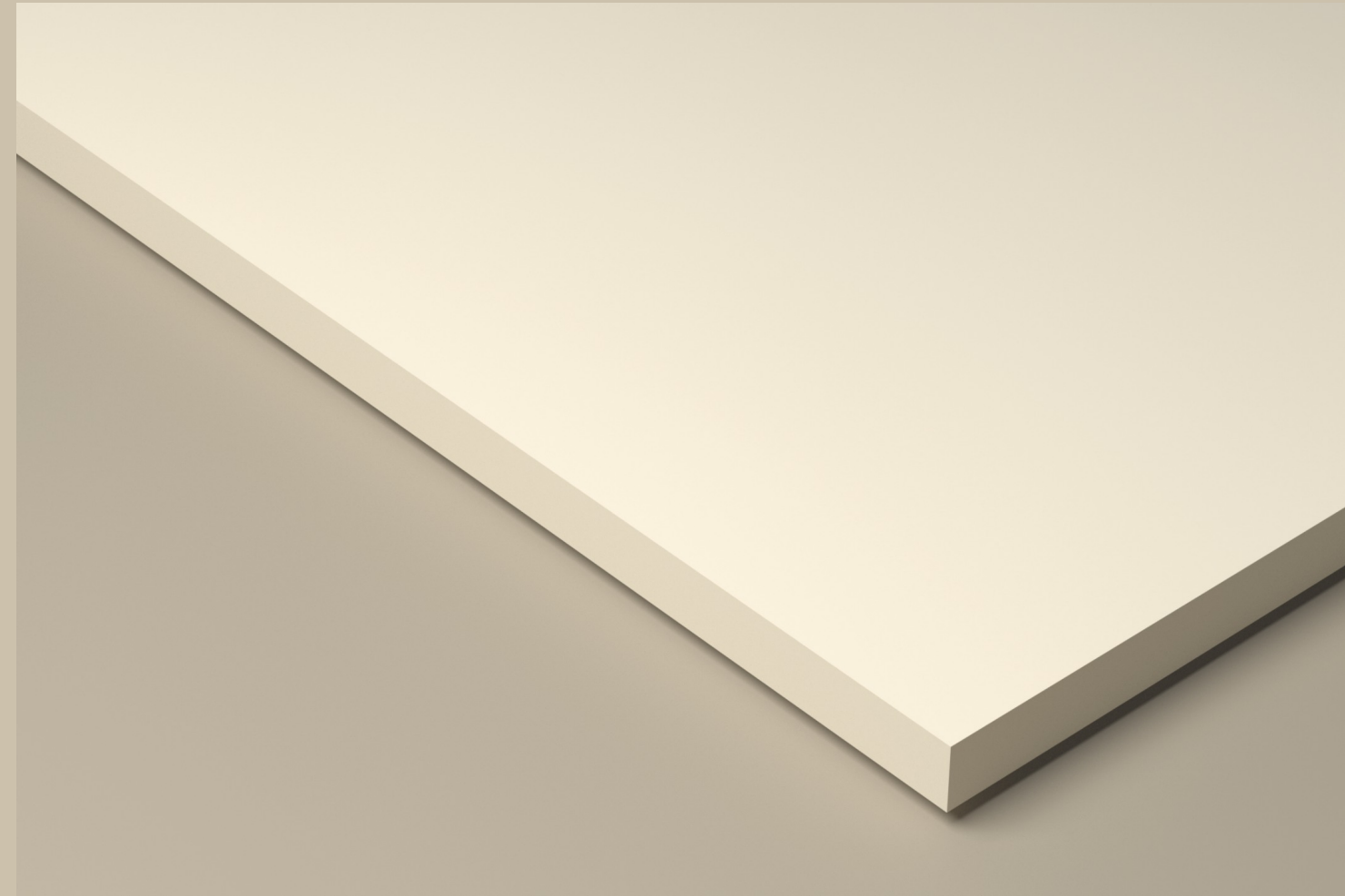
80x
240cm



15mm
Thickness

Finish
Glossy
Matt

Body
Fullbody



Crema



Kitchen Countertop

Crema
80x300cm
Glossy

Backsplash

Crema
80x300cm
Glossy

Kitchen Island

Crema
80x240cm
Glossy

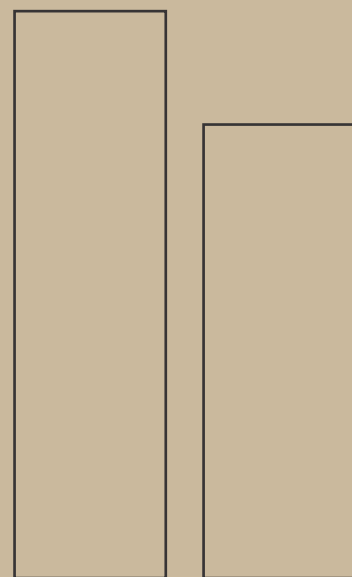
Shelves

Walnut
80x240cm
Glossy

Click Here



Mushroom



80x
300cm

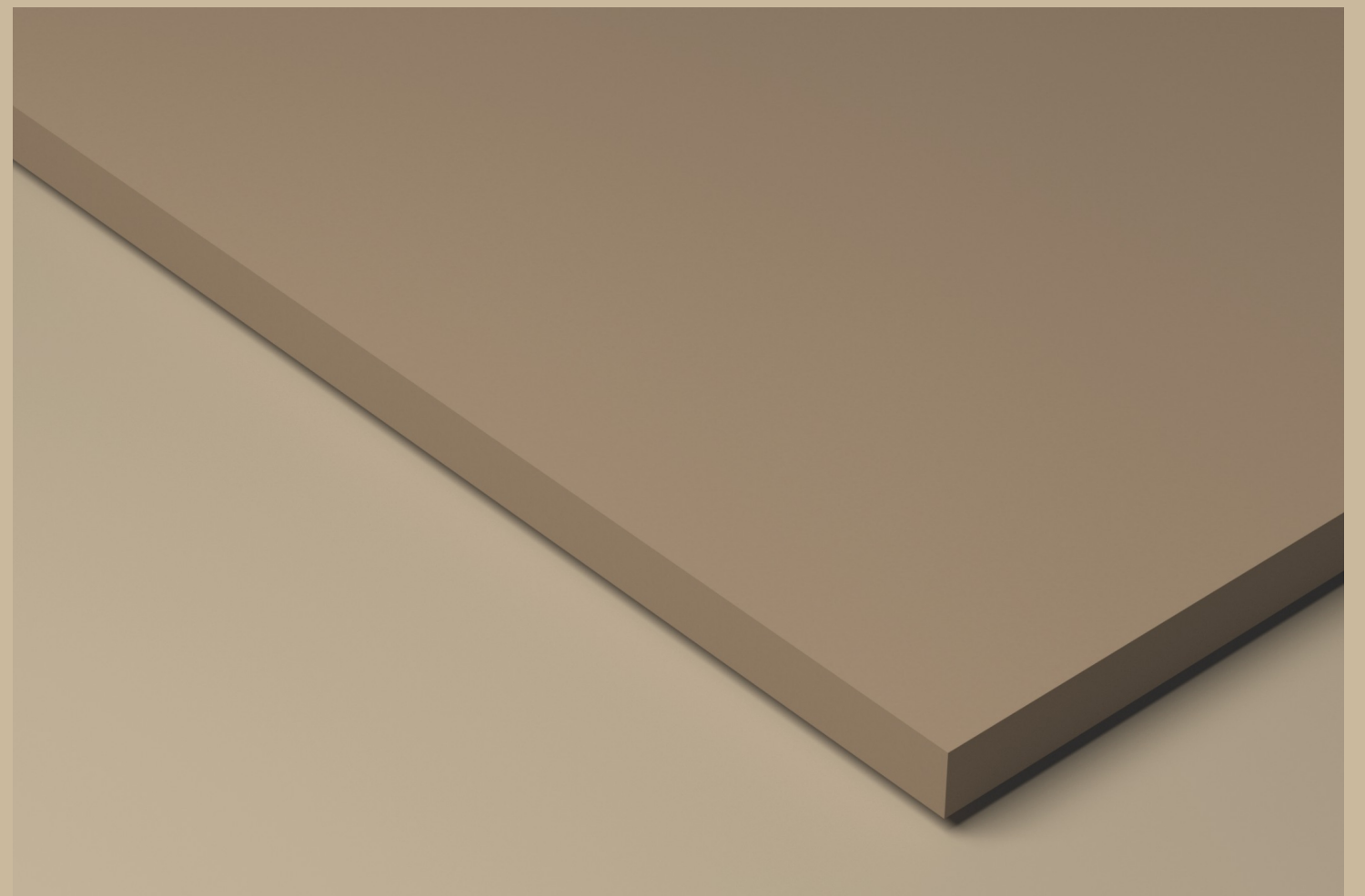
80x
240cm



15mm
Thickness

Finish
Glossy
Matt

Body
Fullbody



Click Here



ROCK SLABS

Reception Desk

**Mushroom
& Crema**
80x240cm
Glossy

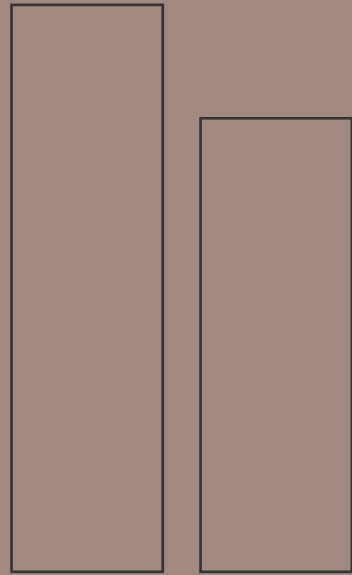
Backdrop Wall

Mushroom
80x240cm
Glossy

Accent Details

Crema
80x240cm
Glossy

VISUAL REPRESENTATION



80x
300cm

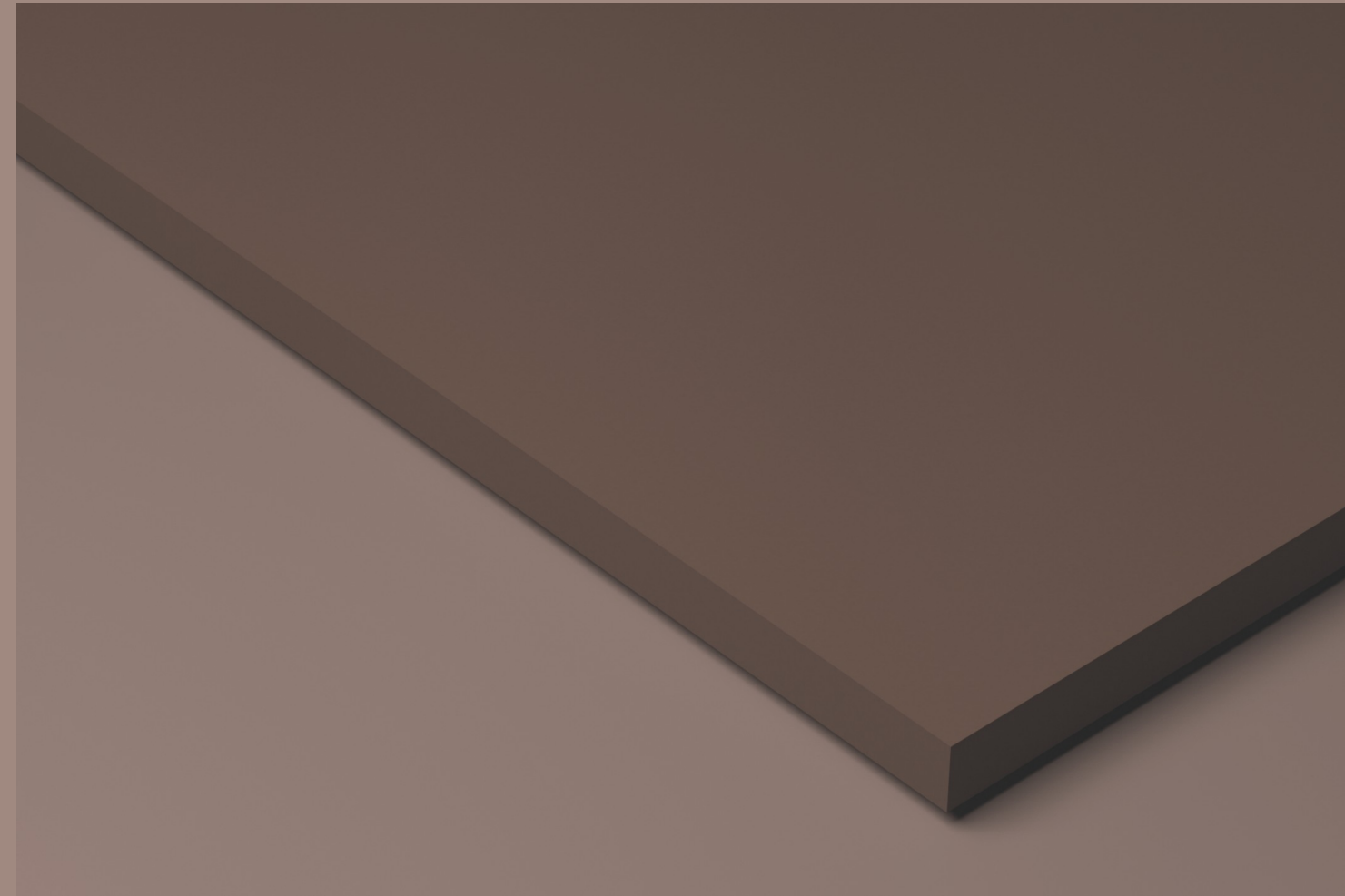
80x
240cm



15mm
Thickness

Finish
Glossy
Matt

Body
Fullbody



Walnut



Kitchen Countertop

Walnut
80x240cm
Glossy

Kitchen Island and Breakfast Bar

Walnut
80x240cm
Glossy

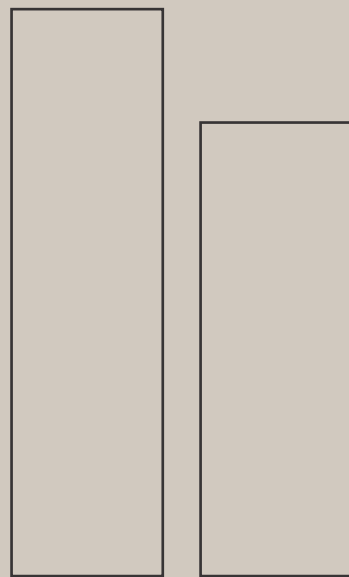
Console Tabletop

Walnut
80x240cm
Glossy

Click Here



Snow



80x
300cm

80x
240cm



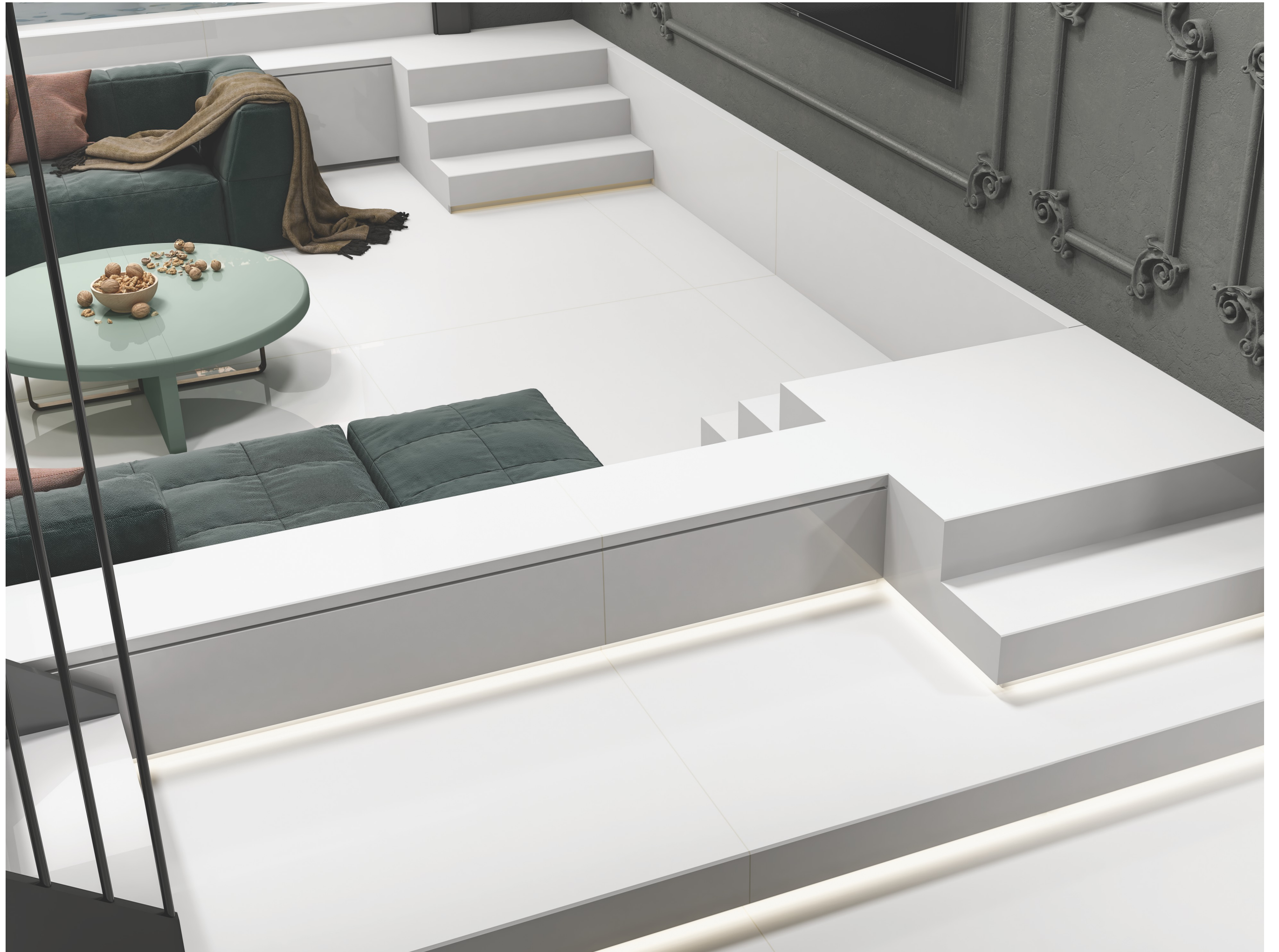
15mm
Thickness

Finish
Glossy
Matt

Body
Fullbody



Click Here



ROCK SLABS

Furnishing

Snow
80x240cm
Glossy

Coffee Table

Kota
80x240cm
Glossy

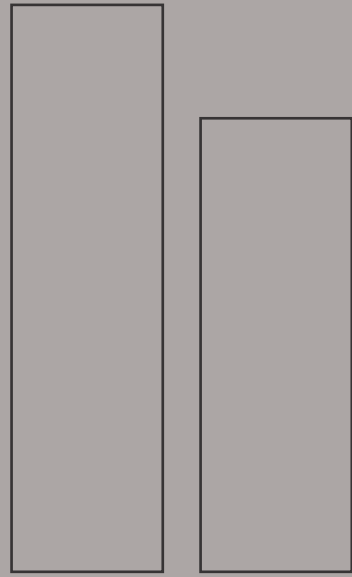
Wall

Snow
80x240cm
Glossy

Floor

Snow
80x240cm
Glossy

VISUAL REPRESENTATION



80x
300cm

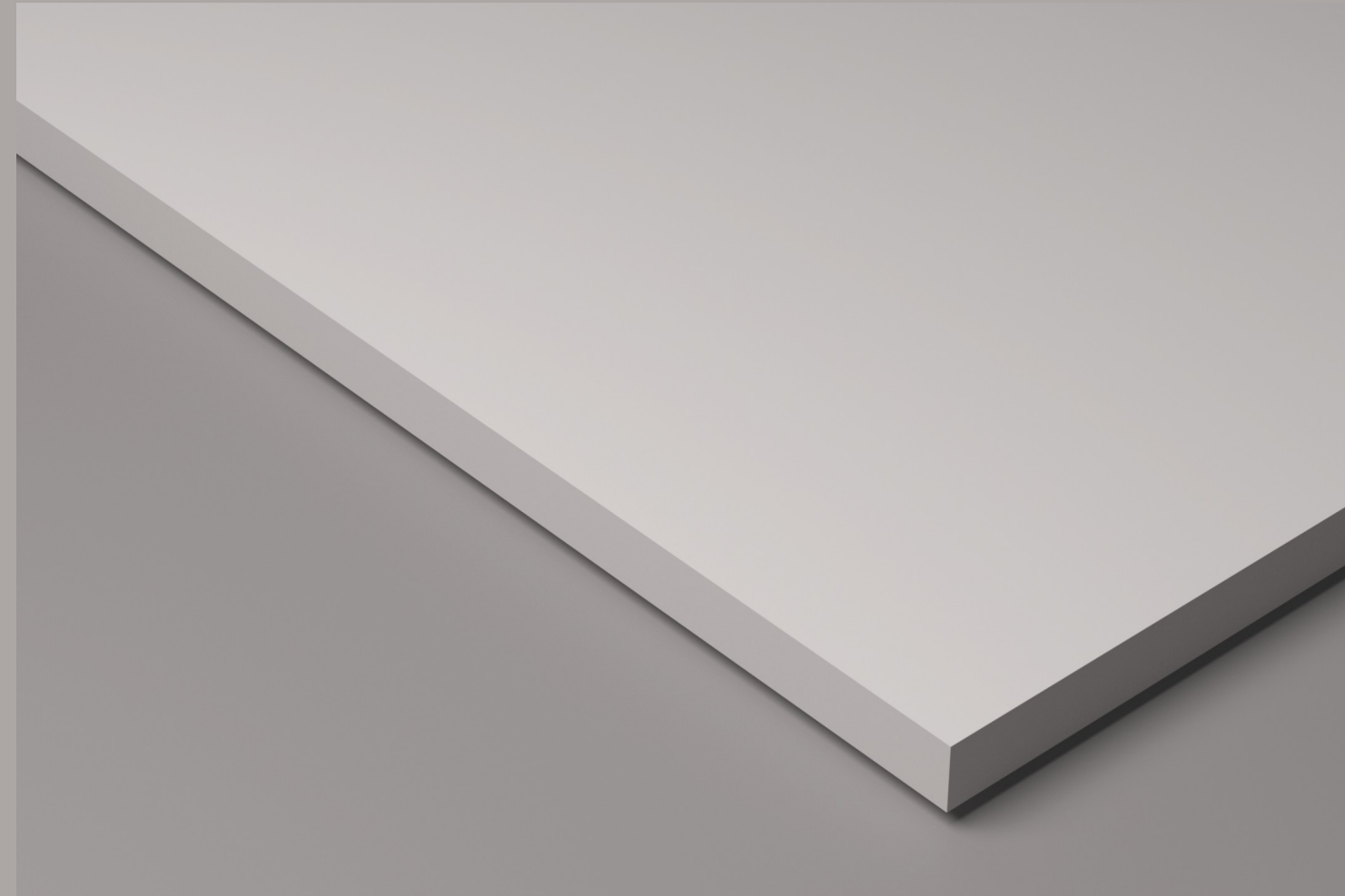
80x
240cm



15mm
Thickness

Finish
Glossy
Matt

Body
Fullbody



Smoke



Vanity Top
Smoke
80x240cm
Matt

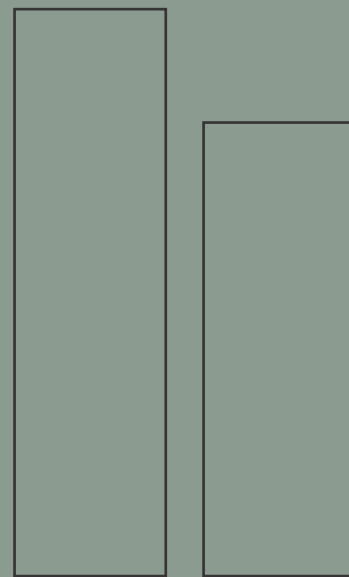
Wall
Snow
80x240cm
Matt

Furnishing
Smoke & Ash
80x240cm
Glossy

Click Here



Kota



80x
300cm

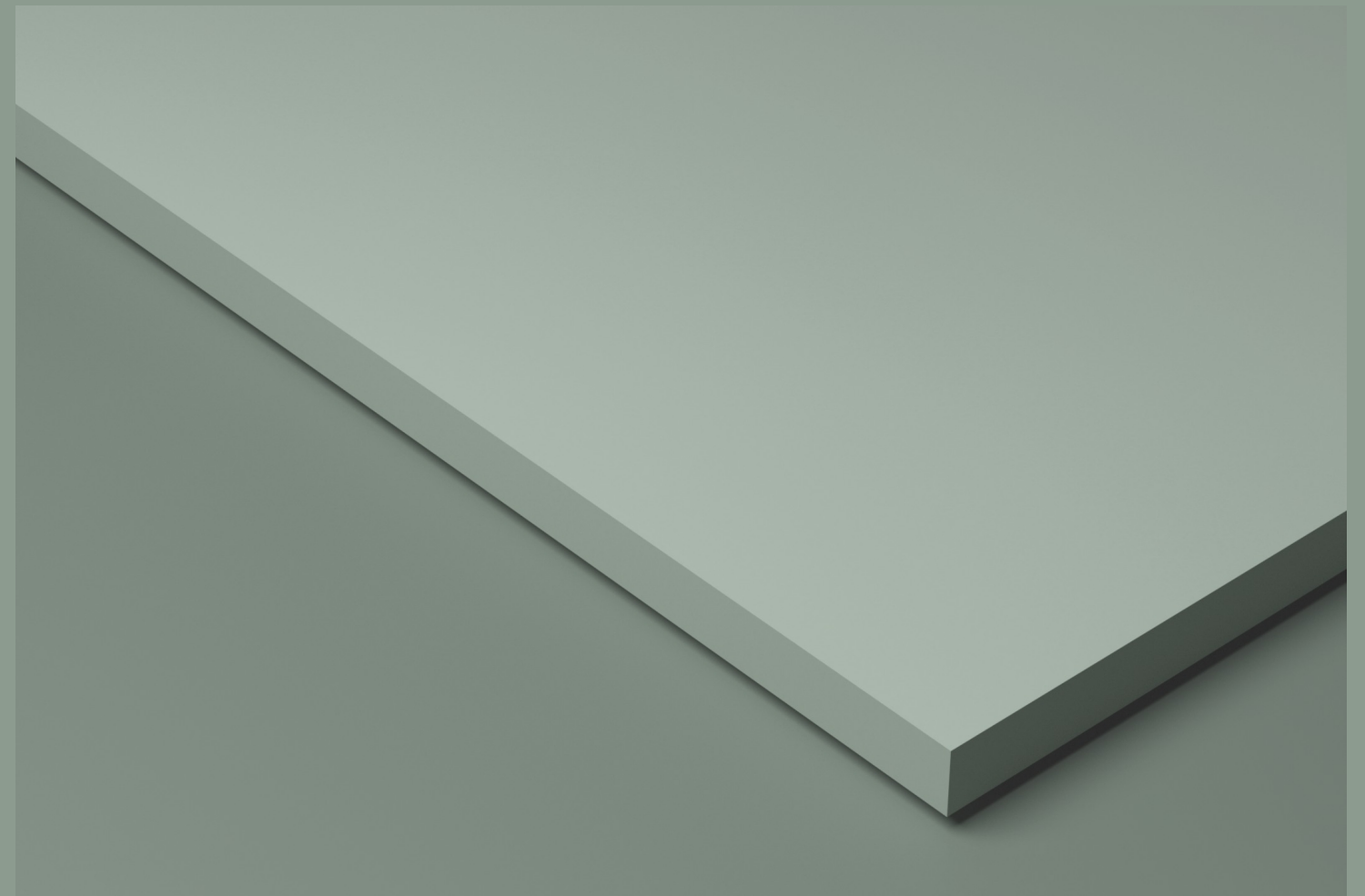
80x
240cm



15mm
Thickness

Finish
Glossy
Matt

Body
Fullbody



Click Here



ROCK SLABS

Staircase

Kota
80x240cm
Matt

Starting Landing

Kota
80x240cm
Matt

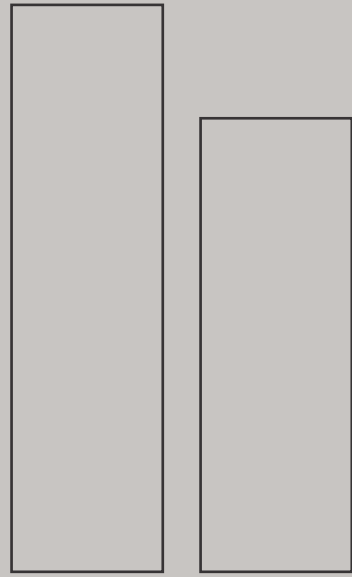
Garden Border

Kota & Mushroom
80x240cm
Matt

Accent Wall

Mushroom
80x240cm
Matt

VISUAL REPRESENTATION



80x
300cm

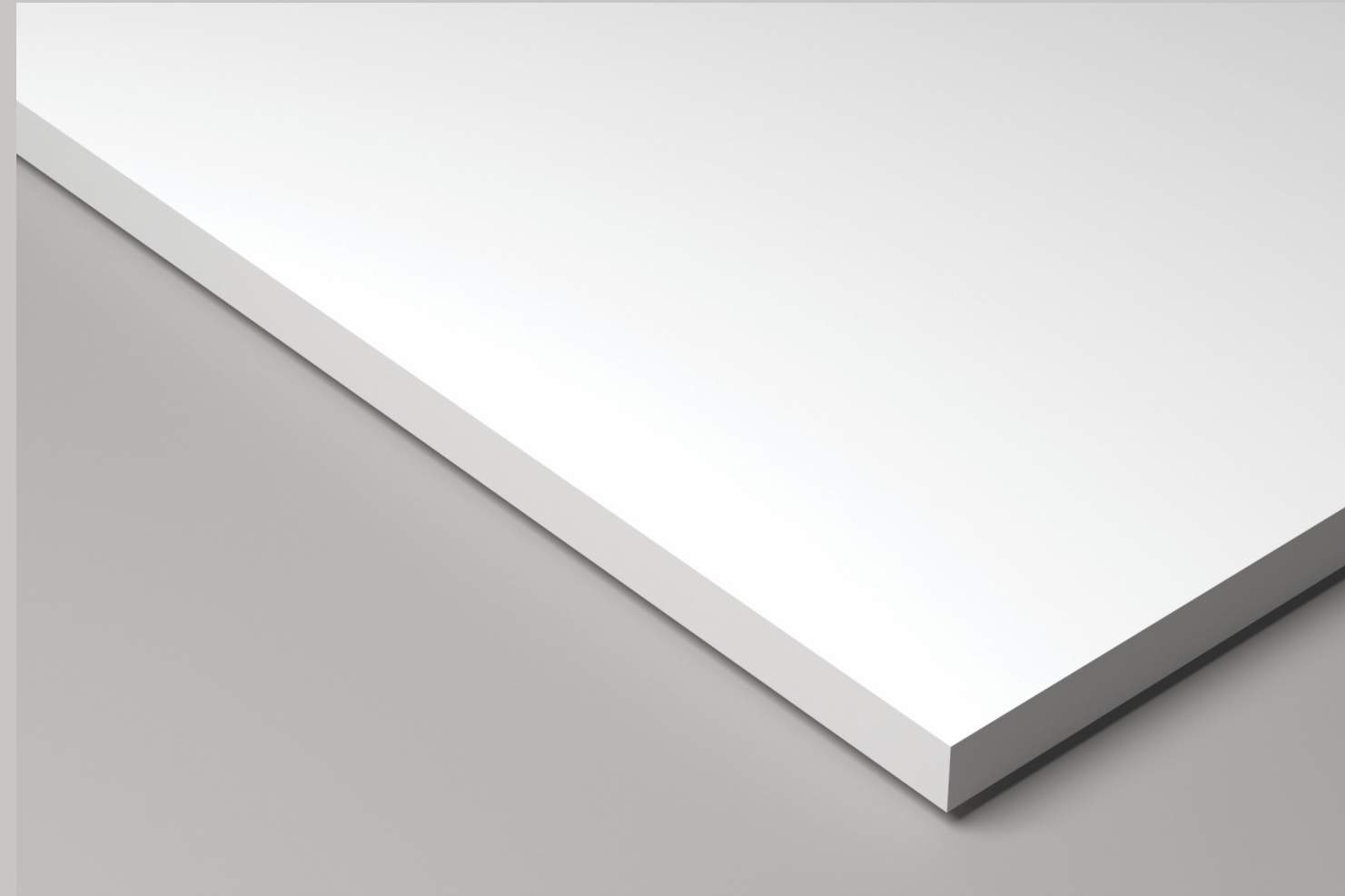
80x
240cm



15mm
Thickness

Finish
Glossy
Matt

Body
Fullbody



Glacier

ROCK SLABS



VISUAL REPRESENTATION

Office Tabletop

Glacier
80x240cm
Glossy

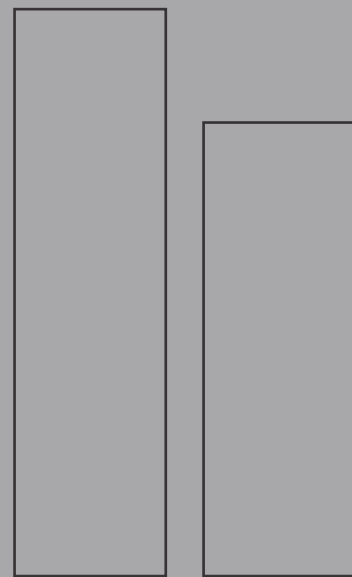
Book Shelves

Glacier
80x240cm
Glossy

Click Here



Ash



80x
300cm

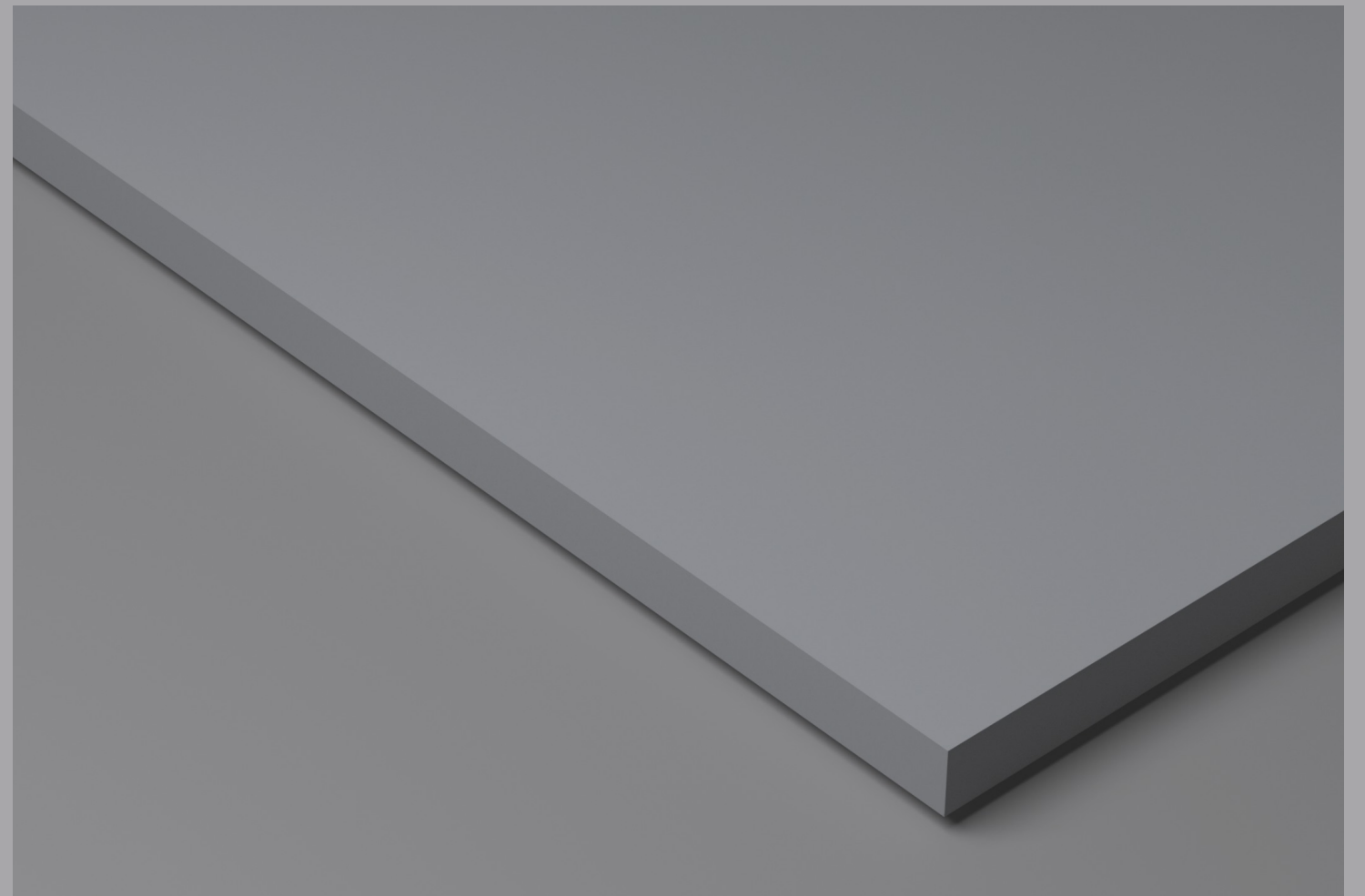
80x
240cm



15mm
Thickness

Finish
Glossy
Matt

Body
Fullbody



Click Here



ROCK SLABS

TV Unit Backdrop Wall

Ash
80x240cm
Glossy

TV Unit

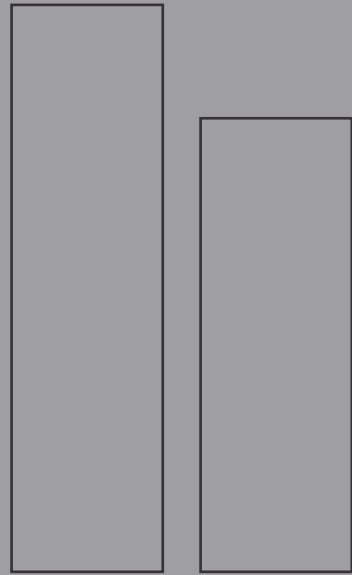
Snow
80x240cm
Glossy

TV Unit Panelling

Snow
80x240cm
Glossy



VISUAL REPRESENTATION



80x
300cm

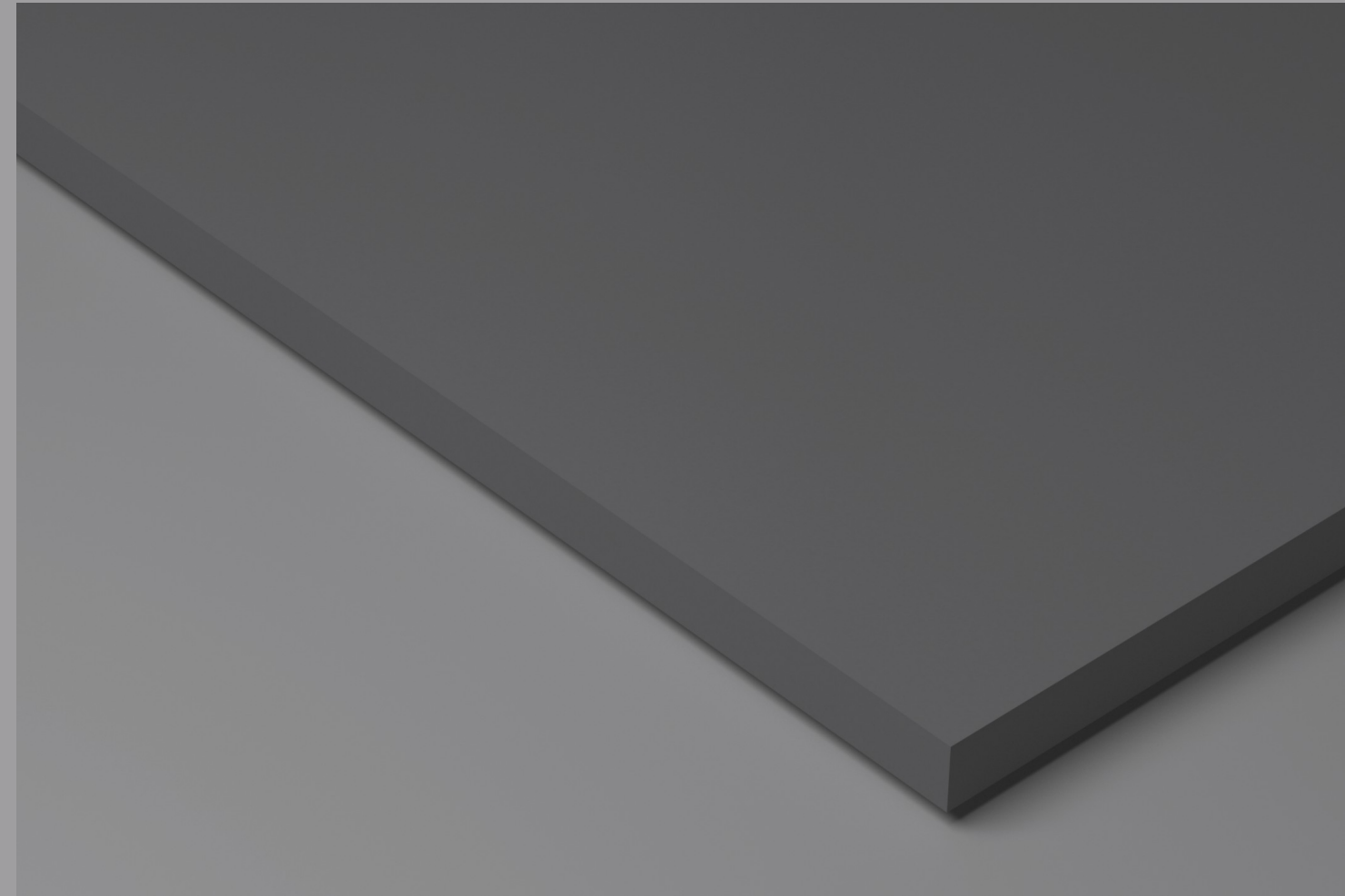
80x
240cm



15mm
Thickness

Finish
Glossy
Matt

Body
Fullbody



Graphite

ROCK SLABS



VISUAL REPRESENTATION

Dining Tabletop

Graphite
80x240cm
Matt

Indoor Garden Wall

Graphite
80x240cm
Matt

Click Here



Rock Black



80x
300cm

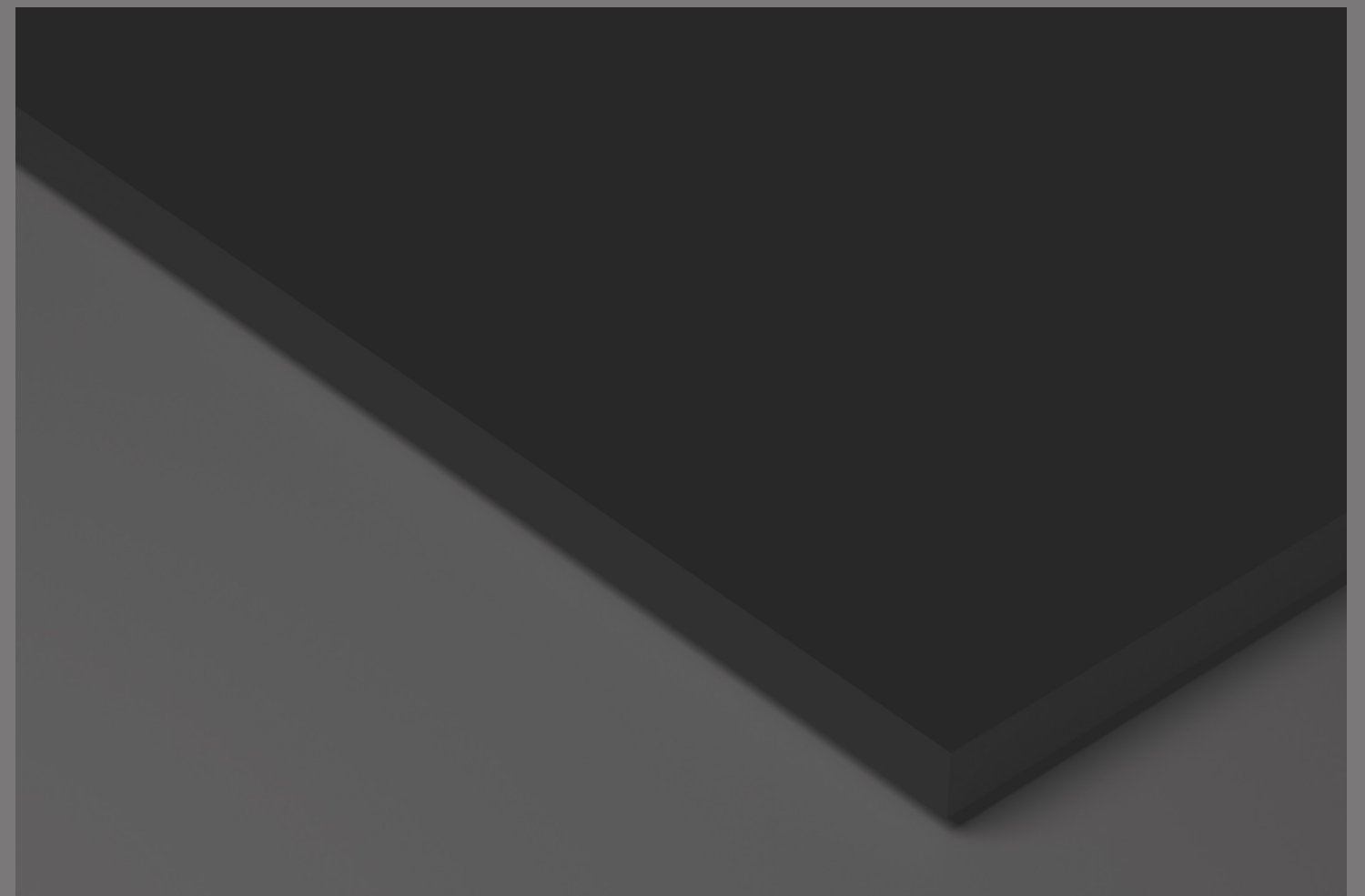
80x
240cm



15mm
Thickness

Finish
Glossy
Matt

Body
Fullbody



Click Here



ROCK SLABS

Lift Frame
Rock Black
80x240cm
Glossy

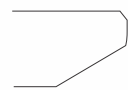
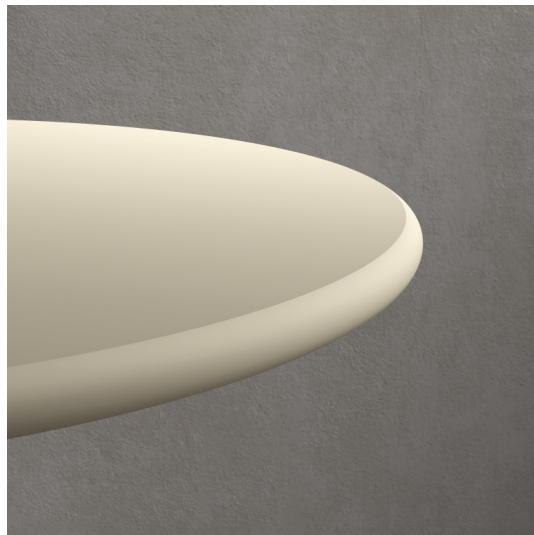
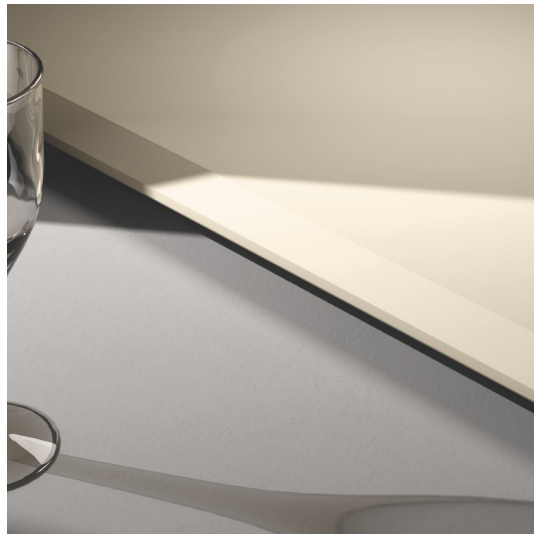
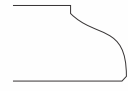
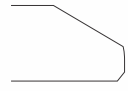
Step
Rock Black
80x240cm
Matt

Riser
Glacier
80x240cm
Matt

VISUAL REPRESENTATION

EDGES

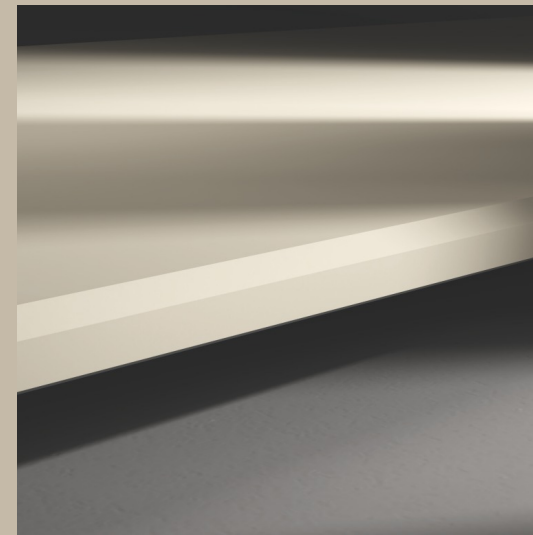
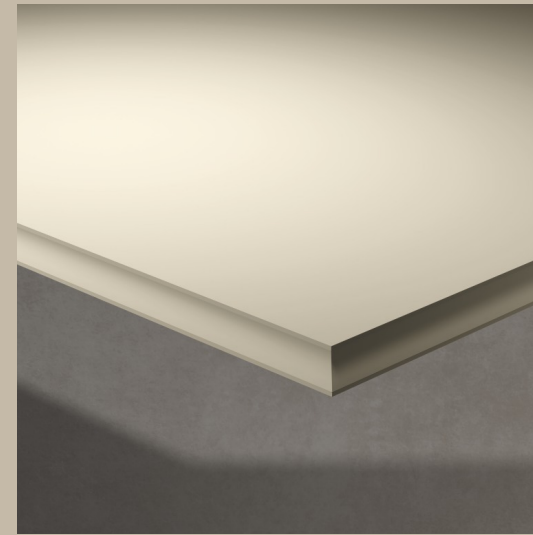
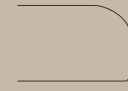
Borders



ROCK SLABS

EDGE PROFILE POSSIBILITIES

Leverage refined detailing that seamlessly integrates safety with design through a wide range of edge profile possibilities. The robust 15mm thickness, combined with fullbody construction, provides the confidence to sculpt and customize edges for countertops, tabletops, and other applications, ensuring structural integrity while minimizing the risk of chipping, cracking, or edge failure.



EDGES

ROCK SLABS

TECHNICAL RECOMMENDATIONS

FABRICATION AND INSTALLATION SUGGESTIONS



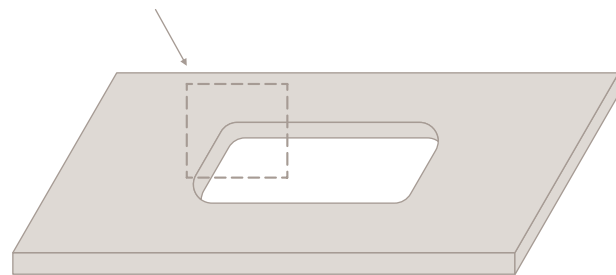
INSTALLATION GUIDE

1. FABRICATION

1.1 INTERNAL CUTOUTS AND HOLES

All internal corners relating to a cut-out must have a minimum radius of 3/16". For industrial kitchens, the minimum radius is 38".

A larger radius provides greater structural strength to the workpiece (Figure 1), whereas any non-radiused corner creates a stress point on the countertop (Figures 2, 3, 4).



$R \geq 3/16"$

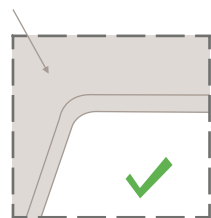


Figure 1

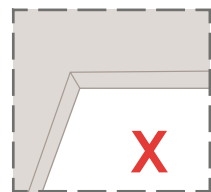


Figure 2

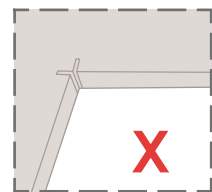


Figure 3

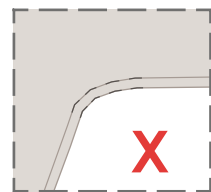
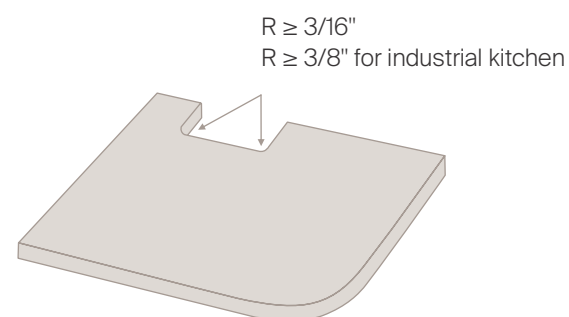


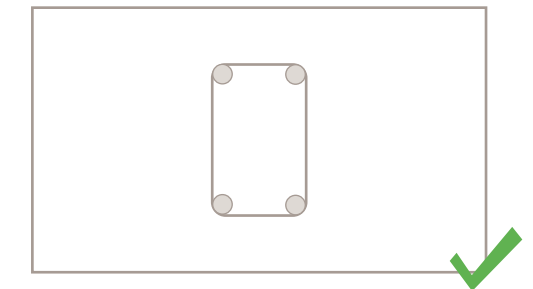
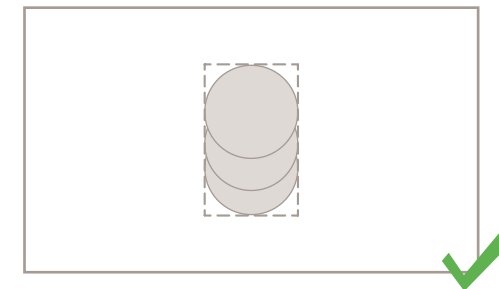
Figure 4

It is recommended to create a minimum radius of 3+16" in the presence of columns or elements requiring the countertop to be cut.



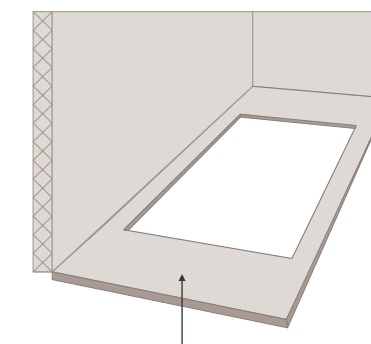
1.2. HOLES FOR ACCESSORIES

It is recommended to create circular holes for accessories / switches, as shown in the pictures below.

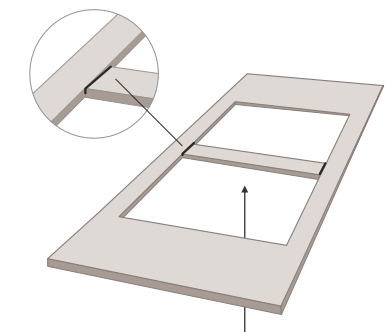


1.3. LARGE CUT-OUTS

In the case of one or more large cut-outs, it is recommended to leave a strip of material to stiffen the countertop. This strip, already engraved at half the thickness, will be cut after installation is complete.



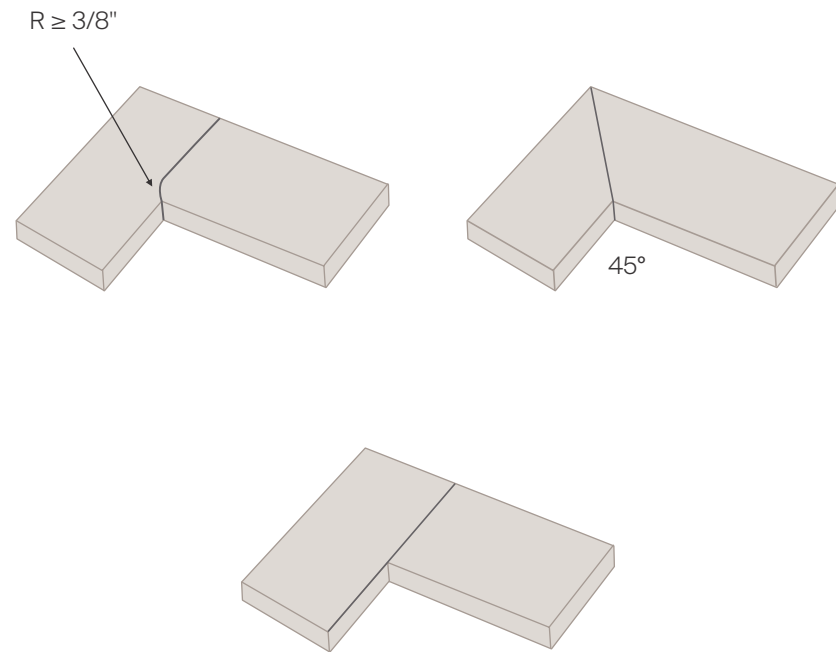
Installed countertop



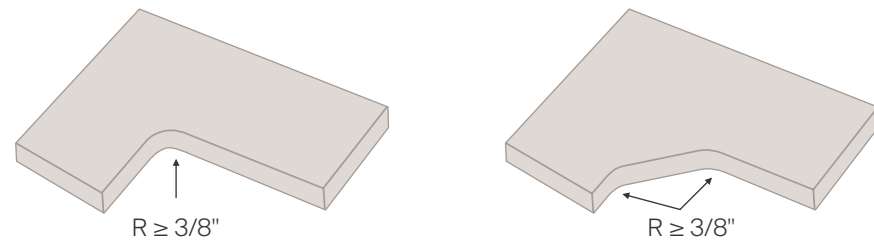
Semi-engraved strip to be cut after laying the countertop

1.4. L-SHAPED WORKPIECES

In the case of an L-shaped kitchen, it is recommended to divide the countertop into two pieces so as not to compromise the strength of the workpiece.

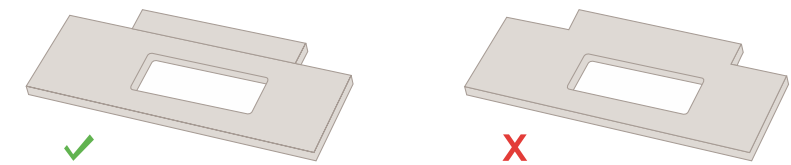


If you want to make a single-piece L-shaped countertop, the minimum radius must be $3/8''$.

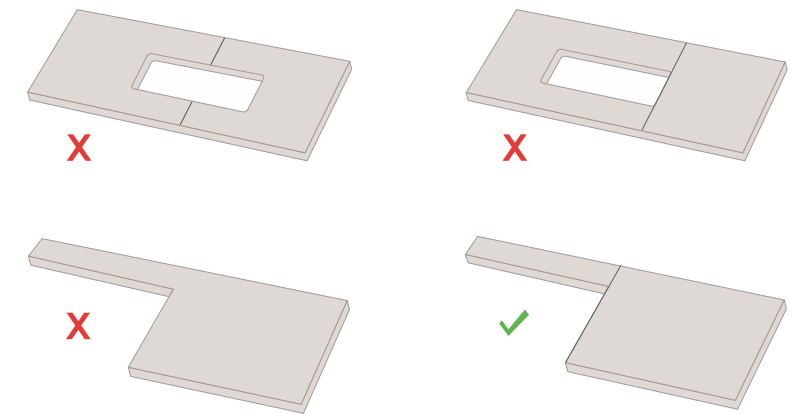


1.5. SPECIAL CASES

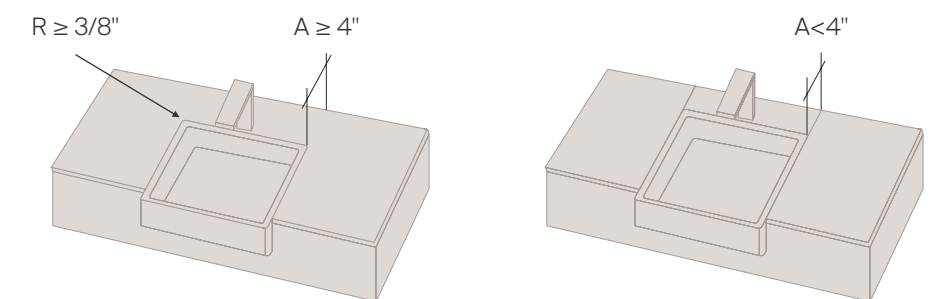
If there are recesses or interior window sills, avoid making the kitchen countertop from a single piece.



Avoid fork cuts

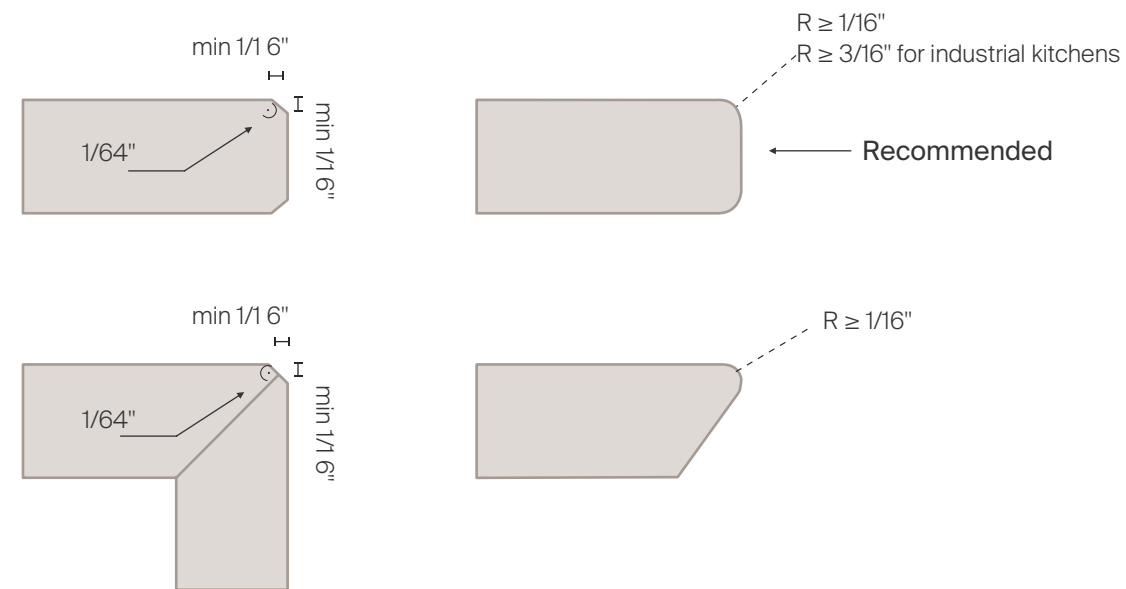


In the case of farm sinks / semi-inset sinks, the countertop can be made from a single piece if the strip behind the sink is at least 4" deep. Otherwise, the countertop can be made in several pieces.



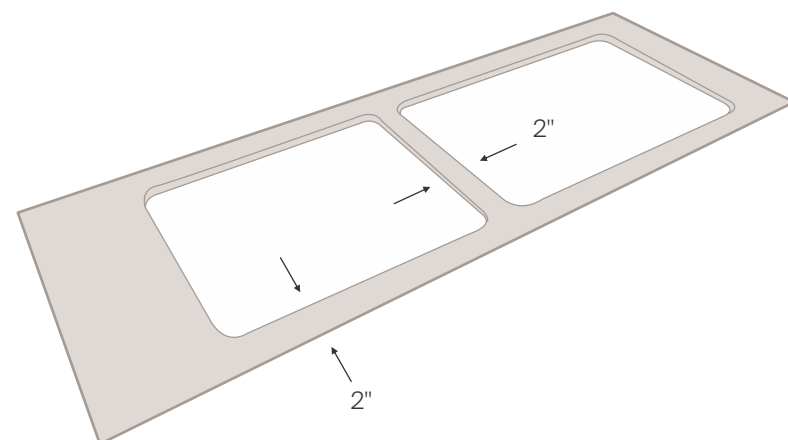
1.6. PROCESSING OF EDGES

It is recommended to process the edges of the workpieces as indicated in the drawing. These instructions are a good compromise between aesthetics and functionality while also guaranteeing a considerable reduction in the risk of chipping.



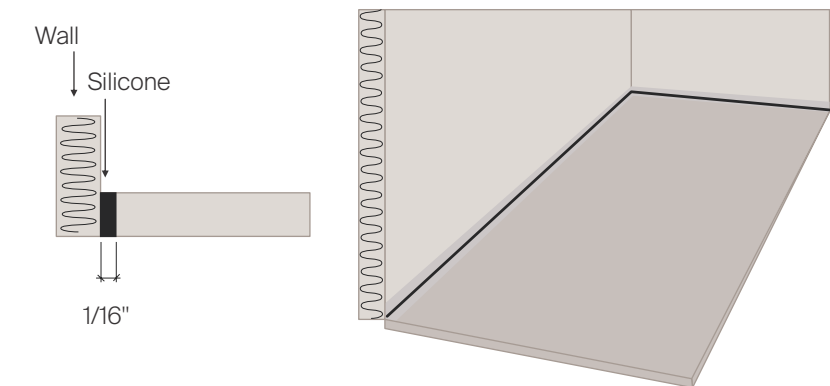
1.7. MINIMUM DISTANCE BETWEEN EDGE AND CUT-OUTS

The recommended minimum distance between cut-out and between edge and cut-out is 2\".

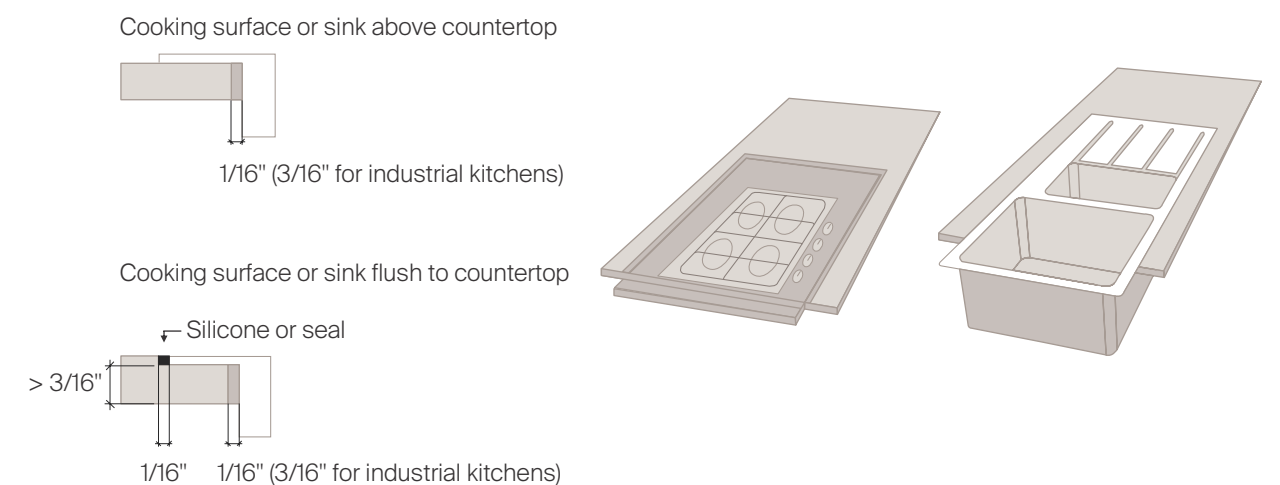


1.8. MINIMUM DISTANCE BETWEEN WALL-SINK-COOKING SURFACE

The recommended minimum distance between the countertop and the wall is 1/16\".



The recommended minimum distance between the countertop and the cooking surface or sink is 1/16\" (1/8\" for industrial kitchens).



WARNING

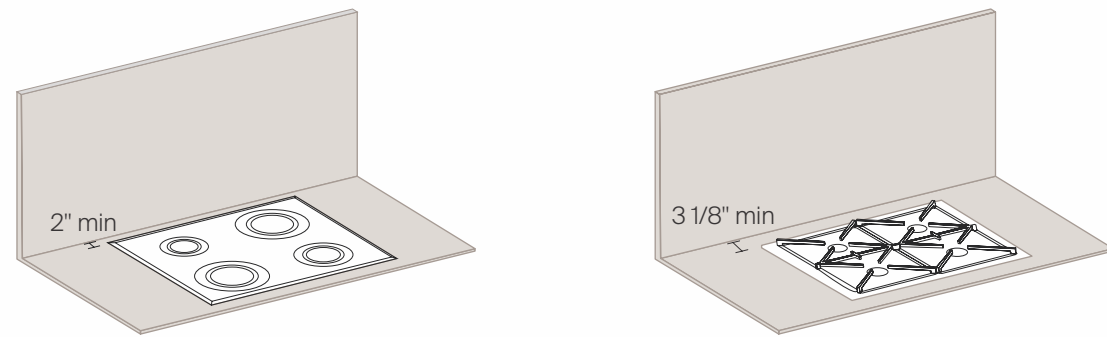
To compensate for the different thermal expansion caused by daily use, a sealant such as silicone or other seals supplied directly by the household appliance manufacturer should be placed between the countertop and the elements fitted inside it. When applying silicone to seal the cooking surface, protect the countertop surface using adhesive tape.

1.9. MINIMUM DISTANCE BETWEEN SPLASHBACK-COOKING SURFACE

With splashbacks over 4" high, it is recommended to keep a minimum distance of:

- 2" between the splashback and the electric hob;

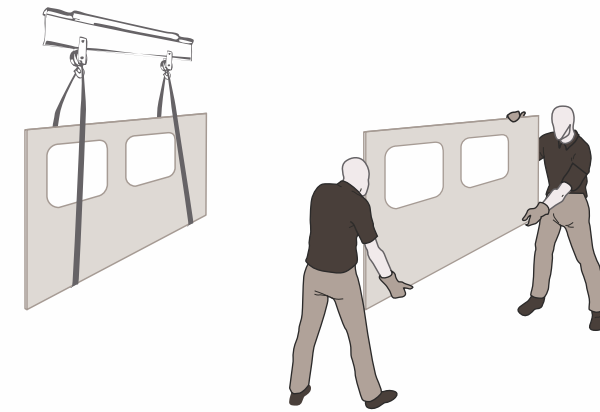
- 3 1/8" between the splashback and the gas hob.



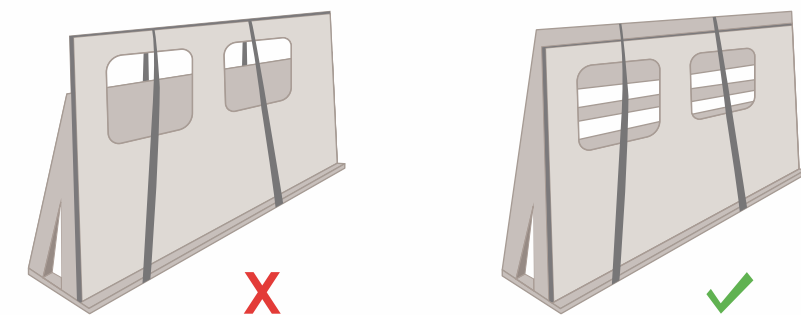
2. HANDLING AND LAYING

2.1. HANDLING AND PACKAGING OF THE WORKPIECE

At all times, when handling and transporting the workpiece, whether by hand or using belts and suction cups, it must be kept in an upright position, as shown in the drawing below. Any holes inside the workpiece must always be facing upwards.

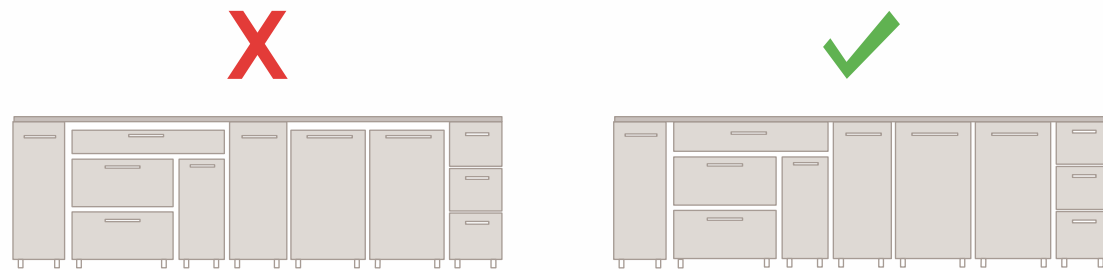


The slabs are packaged on stands and / or in crates. They must be transported individually with care and stacked on their side, regardless of their format, making sure to insert materials (e.g., wooden shims) between the different pieces and between the slabs and the support to prevent any breakages. The slabs should always be properly supported to avoid bending and stored in areas that are not subject to accidental impacts (workplace transport or maneuvering areas).



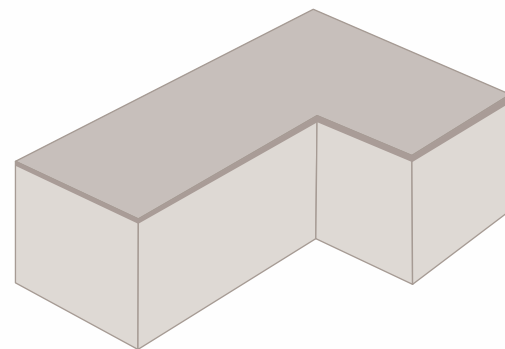
2.2. PRE-LAYING

It is essential that the support base on which the countertop is to be laid is flat, level, and structurally solid. Most breakages during assembly and post-laying are due to an uneven or inadequate support, or the presence of debris or process residues. The surface of the countertop must rest perfectly on the support; any unsupported points may weaken the workpiece. It is therefore not advisable to apply isolated silicone dots. Apply the adhesive evenly over the entire support area, ensuring it adheres completely to the countertop.



For countertops with a thickness of 1/2", it is advisable to ensure full support across the entire surface of the workpiece for greater stability. Use marine plywood with a minimum thickness of 34mm that supports the countertop over the entire area.

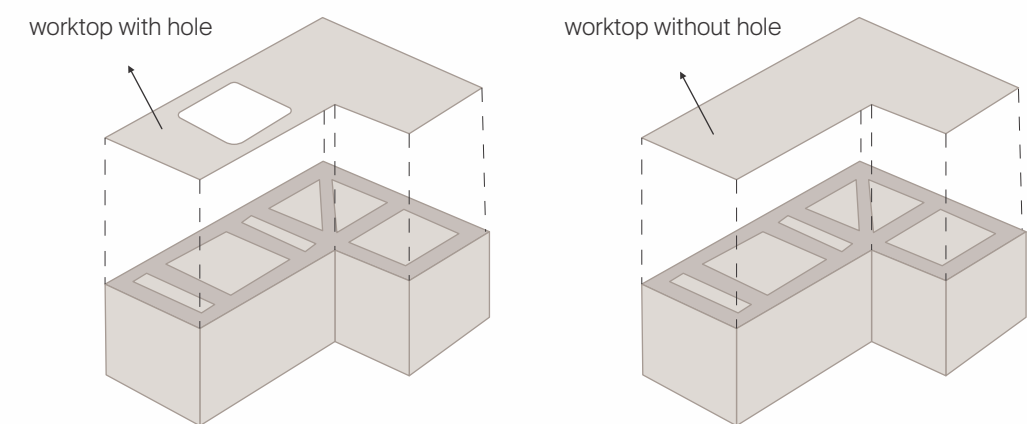
It is also important that the adhesive used to fix the to the support is sufficiently elastic (e.g., silicone) to compensate for any differences in expansion between the two materials.



If a slatted structure is used, observe the maximum distance between the C crosspieces as shown in the following table:

Required support	Thicknesses			Drawing
	1/2"	3/4"	1 1/4"	
Max recommended spans Maximum load 286lb	C ≤ 10"	C ≤ 17 3/4"	C ≤ 23 1/2"	

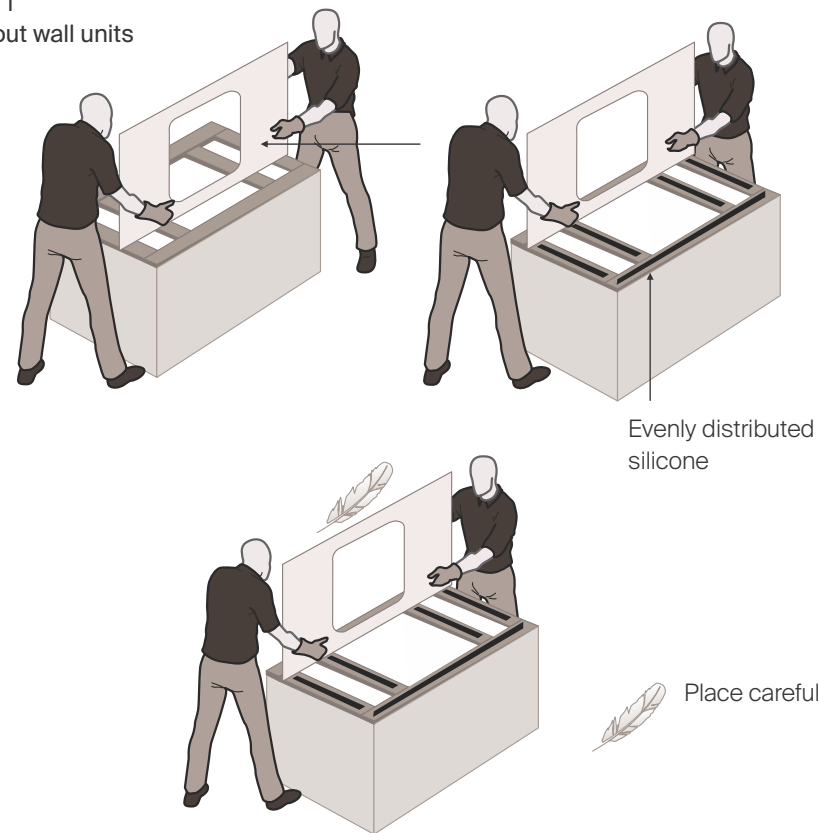
If there is one or more holes (sink hole, gas hole) in the countertop, the most stressed parts must be properly supported to provide adequate stability.



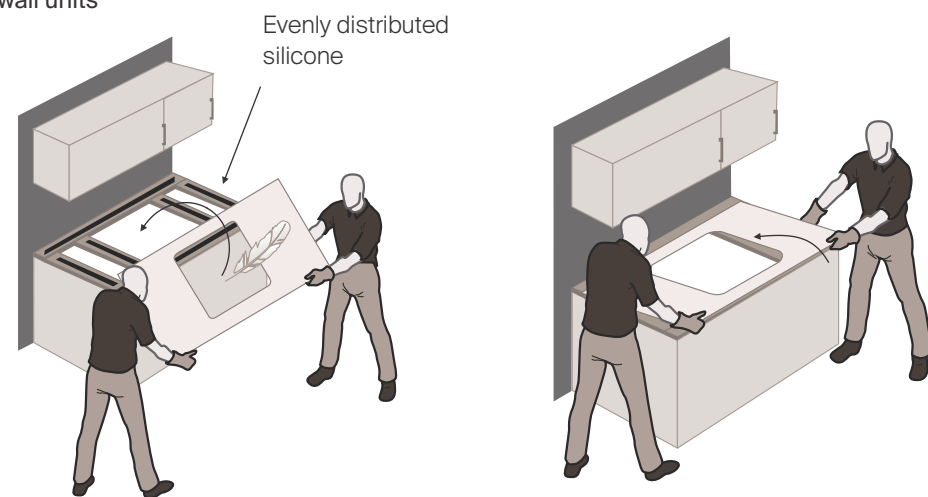
2.3. LAYING

When laying the workpiece, follow the advice below to ensure optimal positioning.

Case 1
Without wall units



Case 2
With wall units



2.3.1 LAYING PIECES WITH ZERO GAP

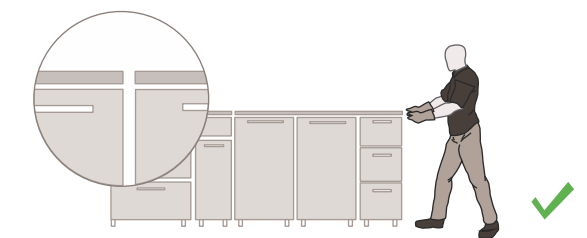
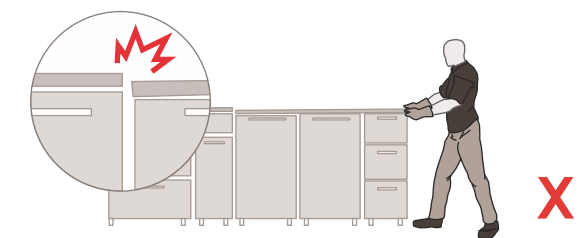
The process of handling and laying workpieces is intricate, both in the workshop when testing their performance and during on-site installation.

It is always recommended to handle workpieces with care, paying attention to the corners and following the instructions below.

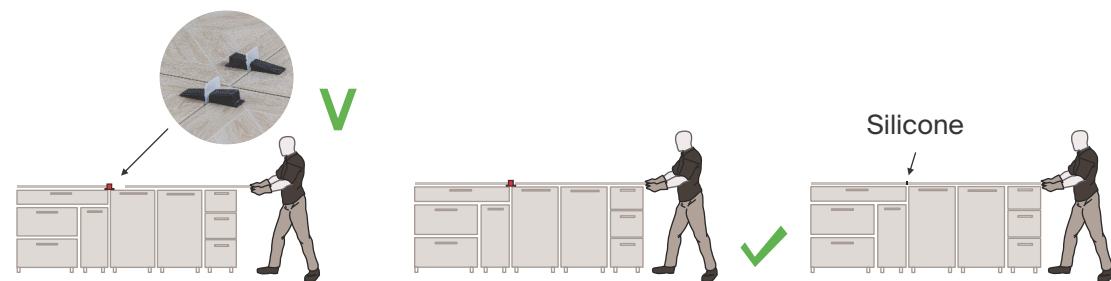
Each corner must have a minimum chamfer on the edge to ensure the solidity of the workpiece.



Before laying, ensure that the support is levelled and perfectly flat; otherwise, adjustments or shims may be necessary. The flanked edges must fit perfectly and not have different angles that could lead to breakages.



To avoid hard impacts between two workpieces and to facilitate the approach of adjacent workpieces, it is always advisable to place shims between them, which will only have to be removed when applying silicone and making subsequent final adjustments with minimum displacements. Care and attention during installation remain a decisive factor.



Joining workpieces with suction cups

Another way to join workpieces with zero gap is to use special equipment with suction cups for the calibrated approach of the workpieces.



TECHNICAL SPECIFICATIONS

CHARACTERISTICS	STANDARD AS PER ISO13006:2018/ EN14411 Gr.Bla	STANDARD AS PER IS 15622:2017 Gr.Bla	MEAN VALUE OF ROCK	METHOD OF TESTING
Regulatory Properties				
Deviation in Length and Width	±0.30 % (±1.00 mm)	±0.10 %	± 0.10 %	ISO 10545-2/IS 13630-1
Deviation in Thickness	±5.0 % (± 0.50 mm)	±5.0 %	± 5.0 %	ISO 10545-2/IS 13630-1
Straightness of Side	±0.30 % (± 0.80 mm)	±0.10 %	± 0.10 %	ISO 10545-2/IS 13630-1
Rectangularity	±0.30 % (±1.50 mm)	±0.10%	± 0.10 %	ISO 10545-2/IS 13630-1
Surface Flatness Central Curvature	±0.40 % (± 1.80 mm)	±0.50 %	± 0.20 %	ISO 10545-2/IS 13630-1
Surface Flatness Edge Curvature	±0.40 % (± 1.80 mm)	±0.50 %	± 0.20 %	ISO 10545-2/IS 13630-1
Surface Flatness Warpage	±0.40 % (± 1.80 mm)	±0.50 %	± 0.10 %	ISO 10545-2/IS 13630-1
Surface Quality	>95% Defect Free	>95% Defect Free	>95% Defect Free	ISO 10545-2/IS 13630-1
Small Color Difference (For Plain Colors)	ΔE <1.00	N.A.	ΔE <0.80	ISO 10545-16
Glossiness (Glossy)	As per Manufacturer	As per Manufacturer	≥ 90	Gloss Meter 60°
Glossiness (Matt)	As per Manufacturer	As per Manufacture	7 ≤ Gloss Value ≤ 25	Gloss Meter 60°
Structural Properties				
Water Absorption	≤0.50 %	≤0.080 %	≤0.080 %	ISO 10545-3/IS 13630-2
Bulk Density	As per Manufacturer	Min 2.20 g/cc	> 2.28 gm/cc	ISO 10545-3/IS 13630-2
Massive Mechanical Properties				
Modulus of Rupture	Min. 35.0 N/mm ²	Min. 35.0 N/mm ²	Min. 40.0 N/mm ²	SO 10545-4/IS 13630-6
Breaking Strength Thickness ≥7.5 mm	Min 1300.0 N	Min 1300.0 N	Min 6000.0 N	ISO 10545-4/IS 13630-6
Surface Mechanical Properties				
Mohs Hardness #	As per Manufacturer	Min. 5	Glossy Min 4**/ Matt Min 6	BS EN 15771/IS 13630-13
Surface Abrasion Resistance #	As per Manufacturer	Min. Class II	Glossy Min II**/ Matt Min III	ISO 10545-7/IS 13630-11
Thermal Hygrometric Properties				
Moisture Expansion	Max. 0.06% (0.6 mm/m)	Max. 0.02 mm/m	Max. 0.02 mm/m	ISO 10545-10/IS 13630-3
Thermal Expansion (COE) at 100°C	As per Manufacturer	Max. 6.0 x 10 ⁻⁶	Max. 6.0 x 10 ⁻⁶	ISO 10545-8/IS 13630-4
Thermal Shock Resistance	Min. 10 Cycles	Min. 10 Cycles	Min. 10 Cycles	ISO 10545-9/IS 13630-5
Impact Resistance (COR) #	Min. 0.55	Min. 0.55	Min. 0.55	ISO 10545-5/IS 13630-14
Frost Resistance	As per Manufacturer	As per Manufacturer	Frost Proof	ISO 10545-12/IS 13630-10
Crazing Resistance at 7.5 bar	4 Cycles	4 Cycles	4 Cycles	ISO 10545-11/IS 13630-9
Chemical Properties				
Resistance to Staining - Glazed	Min. Class 3	Min. Class 1	Min. Class 3/Min. Class 1	ISO 10545-14/IS 13630-8
Resistance to Household Chemicals & Swimming Pool Salts - Glazed	Min. Class GB	Min. Class AA	Min. Class GB/Min Class AA	ISO 10545-13/IS 13630-8
Resistance to Low Concentrate Acids and Alkalis - Glazed	As per Manufacturer	As per Manufacturer	Min. Class GLB***/ Min. Class A***	ISO-10545-13/IS 13630-8
Resistance to High Concentrate Acids and Alkalis - Glazed	As per Manufacturer	As per Manufacturer	Min. Class GHB***/ Min. Class A***	ISO-10545-13/IS 13630-8
Safety Properties				
Skid Resistance - (DCOF - WET PENDULUM) ##	As per Manufacturer	As per Manufacturer	Glossy ≥ P0, Satin, Posh ≥ P1	BS 7976-2
Slip Resistance - Glossy / Matt (DCOF - R Value) ##	As per Manufacturer	As per Manufacturer	R9 to R10	DIN 51130
Lead and Cadmium Release	As per Manufacturer	N.A.	Does not yield Pb & Cd	ISO-10545-15

PACKING DETAILS

SIZES	THICKNESS	PCS/BOX	AREA/BOX	BOX/WT.
800x3000mm	15mm	1 pc	2.40 mt ² 25.83 ft ²	84 kg
800x2400mm	15mm	1 pc	1.92 mt ² 20.67 ft ²	68 kg

www.rockgranito.com
+91 97124 67890

Unchi Mandal, Morbi-Halvad Road,
Morbi, Gujarat (363642) India

ROCK
SLABS